



RESIDENCES

AT DUBAI HARBOUR

A LUXURY MARINA LIFESTYLE



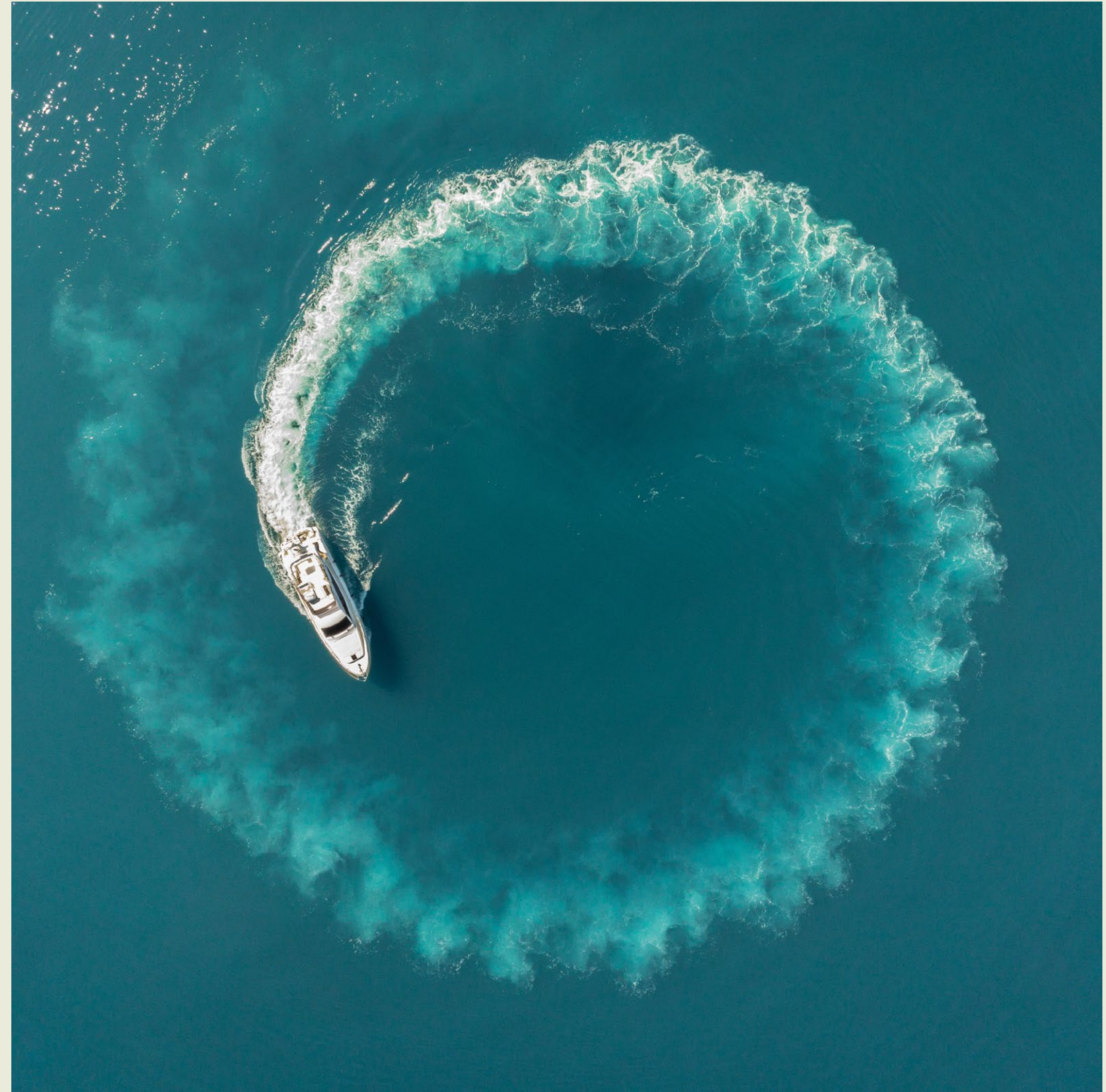


WELCOME TO W RESIDENCES

Experience upscale urban living at its finest, enjoying breathtaking views of the Dubai skyline and a wide range of carefully curated amenities that are second to none.

Owners at W Residences at Dubai Harbour can enjoy an exceptional lifestyle surrounded by iconic landmarks in the beating heart of the one of the world's fastest-growing cities.

With over 400 impeccably appointed homes spread across an immaculately designed three tower complex, W Residences at Dubai Harbour allow owners to experience a fulfilling, positive and active lifestyle.





AN EXTRAORDINARY SEAFRONT DISTRICT



LOCATION



Occupying an enviable position within Dubai's newest waterfront community, W Residences at Dubai Harbour boasts captivating views of The Palm Jumeirah, Dubai Marina and Bluewaters Island, as well as the open ocean. A seafront district like no other, Dubai Harbour seamlessly blends luxury

living with a range of high-end dining, shopping and hospitality experiences, as well as a cruise terminal and the largest marina in the region.



THE LIVING IS IN THE DETAILS





THE BUILDING



With architecture that is inspired by the majesty of its surroundings, W Residences at Dubai Harbour provides a creative environment that will stimulate both residents and visitors.

Designed to connect three horizontal lines – the promenade, the harbour and the sky – that reflect the unique seafront and urban landscape, the three-tower complex also features striking diagonal lines that allow the buildings to ‘touch’ at points where water and sky meet.

This awe-inspiring backdrop is complemented by the shared experiences that form part of the complex in the form of the world-beating amenities and services that are layered into the podium level.



AN ELEVATED LIFESTYLE







THE RESIDENCES

Welcome to W Residences at Dubai Harbour, where a wide range of layouts gives owners the chance to buy the home that best suits their needs.

Select from well-appointed one-bedroom apartments to luxurious five-bedroom residences, which include rooftop penthouses that feature pools with incomparable views. W Residences at Dubai Harbour also contains a range of

three- and four-bedroom duplex apartments located in the central section of each tower, affording an exceptional living experience.

Smart home features come as standard at all Residences, alongside warm and simple design and immaculate finishes. Each home also contains several kitchen components – including washer-dryer, cooking range and hood – provided free of charge.

WHERE THE SUN MEETS THE SEA





SPACES FOR CONNECTIVITY

The Residents Lounge is a platform for engaging and creative gatherings. A practical and inspiring co-working space by day, the Lounge transforms into a stylish social venue by night. Over 170 square meters in size, this area contains flexible and immersive, tech-enabled spaces that can be customized to fit entertainment or corporate needs.

WELLNESS SPA

W Residences at Dubai Harbour also includes a spectacular wellness spa and fitness centre, designed exclusively for residents and located on the podium level. Featuring high-end services and premium relaxation and recovery amenities, this facility is dedicated to boosting residents' health and wellbeing.





YOGA AND PILATES STUDIOS

Residents enjoy exclusive access to premium wellness facilities in the shape of purpose-built studios dedicated to yoga and pilates. These facilities enjoy exceptional views of the surrounding cityscape while providing the perfect location to indulge in meditation and exercise.





CINEMA

Residents can enjoy their very own Cinema, with an exclusive big screen and high-end sound system set aside for booking by owners and their guests.



WELLFIT

Spread over a 43,000 square foot location on the podium level, a flagship Wellfit wellness centre is the largest in the entire Dubai Marina area, offering a range of different workout areas and studios and the very latest high-tech equipment.



CAFE AND FINE DINING

Life looks better at W Residences at Dubai Harbour, thanks to top-tier facilities that make this destination one of the most popular parts of this up-and-coming district.

Owners can also benefit from the carefully curated range of outlets at ground floor level, incorporating fine dining culture at its best.



LONGEST INFINITY POOL

At over 200 meters long, the Infinity Pool on the podium level is one of the longest in the city, complemented by a spacious pool deck and barbecue area.

GAMES ROOM



Located on the podium level, the Games Room contains the full range of classic indoor activities including pool tables and table-tennis tables, while the Sports Simulator room features specialized software linked to a big screen allowing residents to play a huge variety of e-sports.

SOUND SUITE

A private music recording studio, the Sound Suite includes a lounge, live room and main mixing room incorporating the latest high-tech equipment. A new way for bands, DJs and musicians to get creative, this space allows artists the freedom to collaborate in an awe-inspiring location.





KIDS CLUB

Featuring expertly trained staff and a wide range of creative and fun opportunities, the spacious kids club at W Residences at Dubai Harbour offers children a fulfilling and entertaining way to spend their time. With colourful design and a busy schedule of ever-changing activities on offer, parents can rest assured knowing their children are in safe hands.



AMENITIES

- Panoramic views of Dubai Harbour, Bluewaters Island, The Palm Jumeirah and Dubai Marina from every apartment
- Smart home features as standard in each residence
- Residents-only 200m long infinity pool on the podium level
- 24/7 concierge and valet parking
- Access to 170sqm Residents Lounge
- Private cinema, music recording studio and games room
- Meeting and co-working spaces and guest suites for visiting friends or relatives
- Residents-only fitness centre, wellness spa, yoga and pilates studio and kids club
- Residents can also enjoy the 43,000 sqft Wellfit fitness centre
- Easy access to fine dining restaurants at ground floor level
- Easy access to the largest marina in the Gulf
- Easy access to Dubai Harbour Yacht Club



SOAK UP THE
GOOD LIFE





SERVICES



Owners at W Residences at Dubai Harbour have an unparalleled range of services, alongside the world-class amenities on offer. These include a 24/7 concierge, valet parking, high-speed internet access and much more.

Living at W Residences at Dubai Harbour means being part of an exclusive group of creative fellow residents, with a wide range of social and networking facilities allowing for easy connections.



FLOOR PLANS



1st & 2nd Floor Plan

3rd Floor Plan



1 Bedroom
 2 Bedrooms
 2 Bedrooms Duplex
 3 Bedrooms
 3 Bedrooms Duplex
 4 Bedrooms
 4 Bedrooms Duplex
 5 Bedrooms Penthouse
 5 Bedrooms Presidential

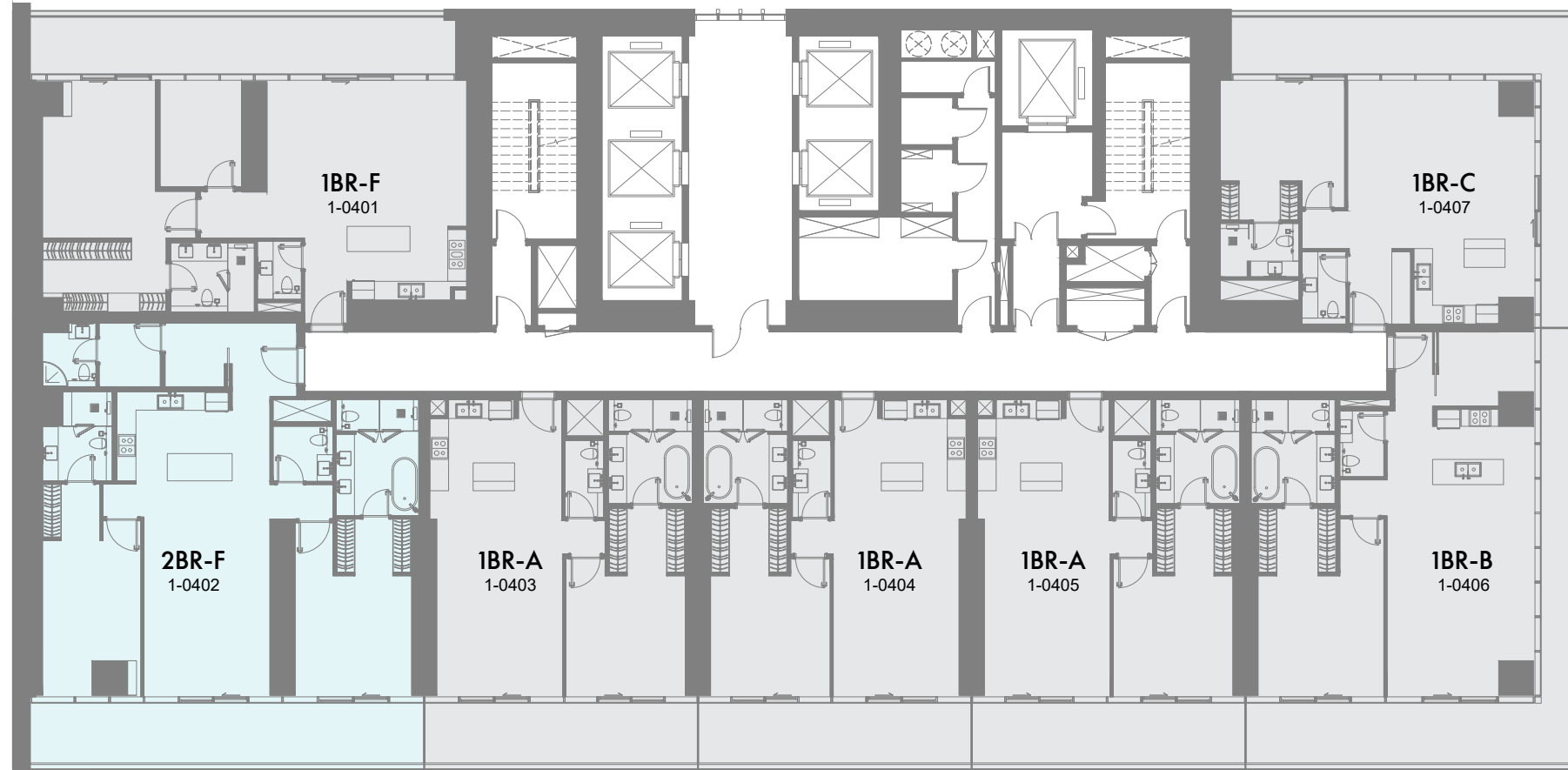
1 Bedroom
 2 Bedrooms
 2 Bedrooms Duplex
 3 Bedrooms
 3 Bedrooms Duplex
 4 Bedrooms
 4 Bedrooms Duplex
 5 Bedrooms Penthouse
 5 Bedrooms Presidential

1-Measurements are indicative 'finish to finish' in Metric & Imperial excluding construction tolerance. 2-Plot/unit dimensions may vary from brochure, and unit types/plans may exist as mirrored versions; 3-All images used are for illustrative purposes only. 4-Unless stated otherwise, all fittings and interior decorative items shown are for illustrative purposes only. 5-The developer reserves the right to make alterations, at its absolute discretion, without any liability whatsoever up to the final 'as built' status.

1-Measurements are indicative 'finish to finish' in Metric & Imperial excluding construction tolerance. 2-Plot/unit dimensions may vary from brochure, and unit types/plans may exist as mirrored versions; 3-All images used are for illustrative purposes only. 4-Unless stated otherwise, all fittings and interior decorative items shown are for illustrative purposes only. 5-The developer reserves the right to make alterations, at its absolute discretion, without any liability whatsoever up to the final 'as built' status.

4th Floor Plan

5th to 7th Floor Plan



1 Bedroom 2 Bedrooms 2 Bedrooms Duplex 3 Bedrooms 3 Bedrooms Duplex 4 Bedrooms 4 Bedrooms Duplex 5 Bedrooms Penthouse 5 Bedrooms Presidential

1 Bedroom 2 Bedrooms 2 Bedrooms Duplex 3 Bedrooms 3 Bedrooms Duplex 4 Bedrooms 4 Bedrooms Duplex 5 Bedrooms Penthouse 5 Bedrooms Presidential

1-Measurements are indicative 'finish to finish' in Metric & Imperial excluding construction tolerance. 2-Plot/unit dimensions may vary from brochure, and unit types/plans may exist as mirrored versions; 3-All images used are for illustrative purposes only. 4-Unless stated otherwise, all fittings and interior decorative items shown are for illustrative purposes only. 5-The developer reserves the right to make alterations, at its absolute discretion, without any liability whatsoever up to the final 'as built' status.

1-Measurements are indicative 'finish to finish' in Metric & Imperial excluding construction tolerance. 2-Plot/unit dimensions may vary from brochure, and unit types/plans may exist as mirrored versions; 3-All images used are for illustrative purposes only. 4-Unless stated otherwise, all fittings and interior decorative items shown are for illustrative purposes only. 5-The developer reserves the right to make alterations, at its absolute discretion, without any liability whatsoever up to the final 'as built' status.

8th Floor Plan



1 Bedroom 2 Bedrooms 2 Bedrooms Duplex 3 Bedrooms 3 Bedrooms Duplex 4 Bedrooms 4 Bedrooms Duplex 5 Bedrooms Penthouse 5 Bedrooms Presidential

1-Measurements are indicative 'finish to finish' in Metric & Imperial excluding construction tolerance. 2-Plot/unit dimensions may vary from brochure, and unit types/plans may exist as mirrored versions; 3-All images used are for illustrative purposes only. 4-Unless stated otherwise, all fittings and interior decorative items shown are for illustrative purposes only. 5-The developer reserves the right to make alterations, at its absolute discretion, without any liability whatsoever up to the final 'as built' status.

9th Floor Plan



1 Bedroom 2 Bedrooms 2 Bedrooms Duplex 3 Bedrooms 3 Bedrooms Duplex 4 Bedrooms 4 Bedrooms Duplex 5 Bedrooms Penthouse 5 Bedrooms Presidential

1-Measurements are indicative 'finish to finish' in Metric & Imperial excluding construction tolerance. 2-Plot/unit dimensions may vary from brochure, and unit types/plans may exist as mirrored versions; 3-All images used are for illustrative purposes only. 4-Unless stated otherwise, all fittings and interior decorative items shown are for illustrative purposes only. 5-The developer reserves the right to make alterations, at its absolute discretion, without any liability whatsoever up to the final 'as built' status.

10th Floor Plan



1 Bedroom
 2 Bedrooms
 2 Bedrooms Duplex
 3 Bedrooms
 3 Bedrooms Duplex
 4 Bedrooms
 4 Bedrooms Duplex
 5 Bedrooms Penthouse
 5 Bedrooms Presidential

1-Measurements are indicative 'finish to finish' in Metric & Imperial excluding construction tolerance. 2-Plot/unit dimensions may vary from brochure, and unit types/plans may exist as mirrored versions; 3-All images used are for illustrative purposes only. 4-Unless stated otherwise, all fittings and interior decorative items shown are for illustrative purposes only. 5-The developer reserves the right to make alterations, at its absolute discretion, without any liability whatsoever up to the final 'as built' status.

11th Floor Plan

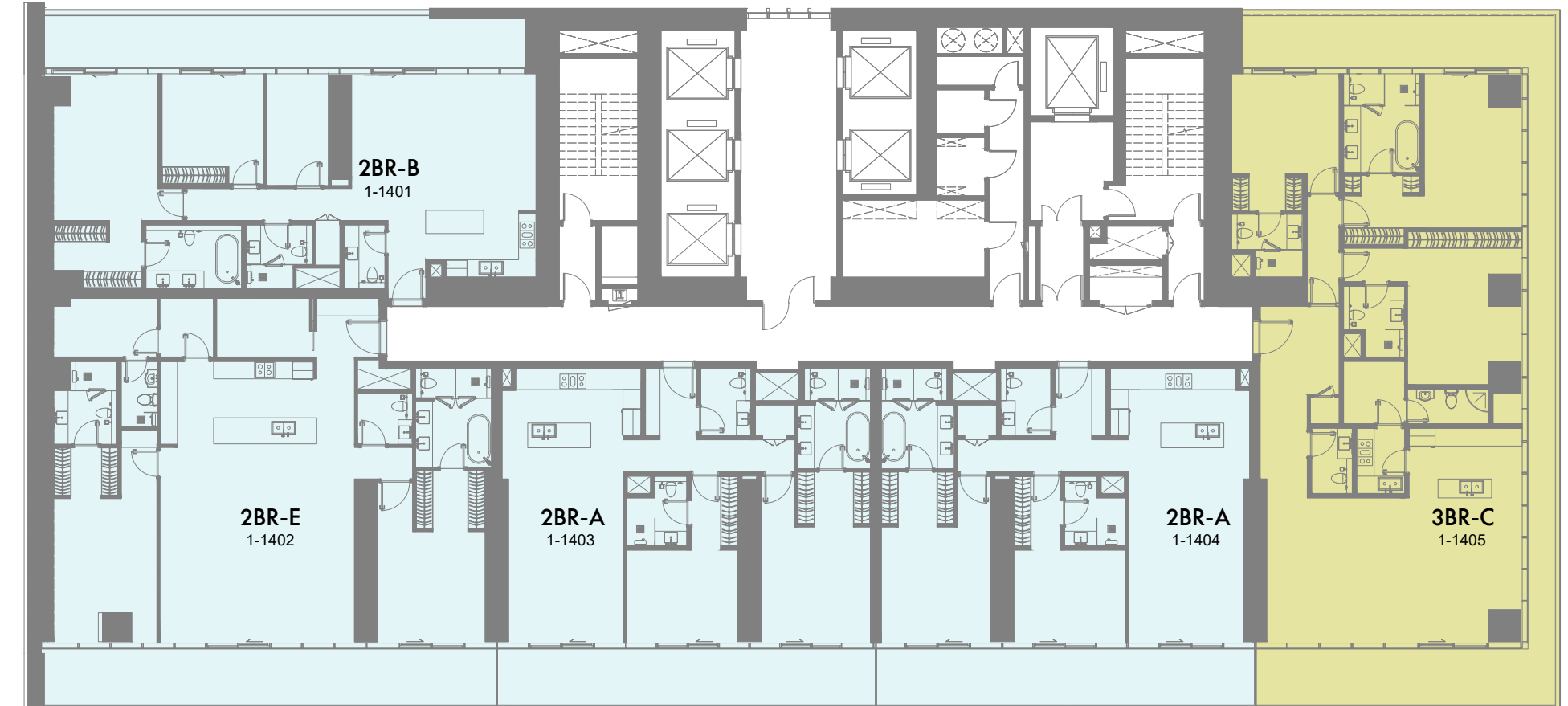


1 Bedroom
 2 Bedrooms
 2 Bedrooms Duplex
 3 Bedrooms
 3 Bedrooms Duplex
 4 Bedrooms
 4 Bedrooms Duplex
 5 Bedrooms Penthouse
 5 Bedrooms Presidential

1-Measurements are indicative 'finish to finish' in Metric & Imperial excluding construction tolerance. 2-Plot/unit dimensions may vary from brochure, and unit types/plans may exist as mirrored versions; 3-All images used are for illustrative purposes only. 4-Unless stated otherwise, all fittings and interior decorative items shown are for illustrative purposes only. 5-The developer reserves the right to make alterations, at its absolute discretion, without any liability whatsoever up to the final 'as built' status.

12th Floor Plan

14th Floor Plan



1 Bedroom 2 Bedrooms 2 Bedrooms Duplex 3 Bedrooms 3 Bedrooms Duplex 4 Bedrooms 4 Bedrooms Duplex 5 Bedrooms Penthouse 5 Bedrooms Presidential

1 Bedroom 2 Bedrooms 2 Bedrooms Duplex 3 Bedrooms 3 Bedrooms Duplex 4 Bedrooms 4 Bedrooms Duplex 5 Bedrooms Penthouse 5 Bedrooms Presidential

1-Measurements are indicative 'finish to finish' in Metric & Imperial excluding construction tolerance. 2-Plot/unit dimensions may vary from brochure, and unit types/plans may exist as mirrored versions; 3-All images used are for illustrative purposes only. 4-Unless stated otherwise, all fittings and interior decorative items shown are for illustrative purposes only. 5-The developer reserves the right to make alterations, at its absolute discretion, without any liability whatsoever up to the final 'as built' status.

1-Measurements are indicative 'finish to finish' in Metric & Imperial excluding construction tolerance. 2-Plot/unit dimensions may vary from brochure, and unit types/plans may exist as mirrored versions; 3-All images used are for illustrative purposes only. 4-Unless stated otherwise, all fittings and interior decorative items shown are for illustrative purposes only. 5-The developer reserves the right to make alterations, at its absolute discretion, without any liability whatsoever up to the final 'as built' status.

15th Floor Plan

16th to 20th Floor Plan



1 Bedroom 2 Bedrooms 2 Bedrooms Duplex 3 Bedrooms 3 Bedrooms Duplex 4 Bedrooms 4 Bedrooms Duplex 5 Bedrooms Penthouse 5 Bedrooms Presidential

1 Bedroom 2 Bedrooms 2 Bedrooms Duplex 3 Bedrooms 3 Bedrooms Duplex 4 Bedrooms 4 Bedrooms Duplex 5 Bedrooms Penthouse 5 Bedrooms Presidential

1-Measurements are indicative 'finish to finish' in Metric & Imperial excluding construction tolerance. 2-Plot/unit dimensions may vary from brochure, and unit types/plans may exist as mirrored versions; 3-All images used are for illustrative purposes only. 4-Unless stated otherwise, all fittings and interior decorative items shown are for illustrative purposes only. 5-The developer reserves the right to make alterations, at its absolute discretion, without any liability whatsoever up to the final 'as built' status.

1-Measurements are indicative 'finish to finish' in Metric & Imperial excluding construction tolerance. 2-Plot/unit dimensions may vary from brochure, and unit types/plans may exist as mirrored versions; 3-All images used are for illustrative purposes only. 4-Unless stated otherwise, all fittings and interior decorative items shown are for illustrative purposes only. 5-The developer reserves the right to make alterations, at its absolute discretion, without any liability whatsoever up to the final 'as built' status.

21st Floor Plan

22nd Floor Plan



1 Bedroom 2 Bedrooms 2 Bedrooms Duplex 3 Bedrooms 3 Bedrooms Duplex 4 Bedrooms 4 Bedrooms Duplex 5 Bedrooms Penthouse 5 Bedrooms Presidential

1 Bedroom 2 Bedrooms 2 Bedrooms Duplex 3 Bedrooms 3 Bedrooms Duplex 4 Bedrooms 4 Bedrooms Duplex 5 Bedrooms Penthouse 5 Bedrooms Presidential

1-Measurements are indicative 'finish to finish' in Metric & Imperial excluding construction tolerance. 2-Plot/unit dimensions may vary from brochure, and unit types/plans may exist as mirrored versions; 3-All images used are for illustrative purposes only. 4-Unless stated otherwise, all fittings and interior decorative items shown are for illustrative purposes only. 5-The developer reserves the right to make alterations, at its absolute discretion, without any liability whatsoever up to the final 'as built' status.

1-Measurements are indicative 'finish to finish' in Metric & Imperial excluding construction tolerance. 2-Plot/unit dimensions may vary from brochure, and unit types/plans may exist as mirrored versions; 3-All images used are for illustrative purposes only. 4-Unless stated otherwise, all fittings and interior decorative items shown are for illustrative purposes only. 5-The developer reserves the right to make alterations, at its absolute discretion, without any liability whatsoever up to the final 'as built' status.

23rd to 27th Floor Plan



1 Bedroom 2 Bedrooms 2 Bedrooms Duplex 3 Bedrooms 3 Bedrooms Duplex 4 Bedrooms 4 Bedrooms Duplex 5 Bedrooms Penthouse 5 Bedrooms Presidential

1-Measurements are indicative 'finish to finish' in Metric & Imperial excluding construction tolerance. 2-Plot/unit dimensions may vary from brochure, and unit types/plans may exist as mirrored versions; 3-All images used are for illustrative purposes only. 4-Unless stated otherwise, all fittings and interior decorative items shown are for illustrative purposes only. 5-The developer reserves the right to make alterations, at its absolute discretion, without any liability whatsoever up to the final 'as built' status.

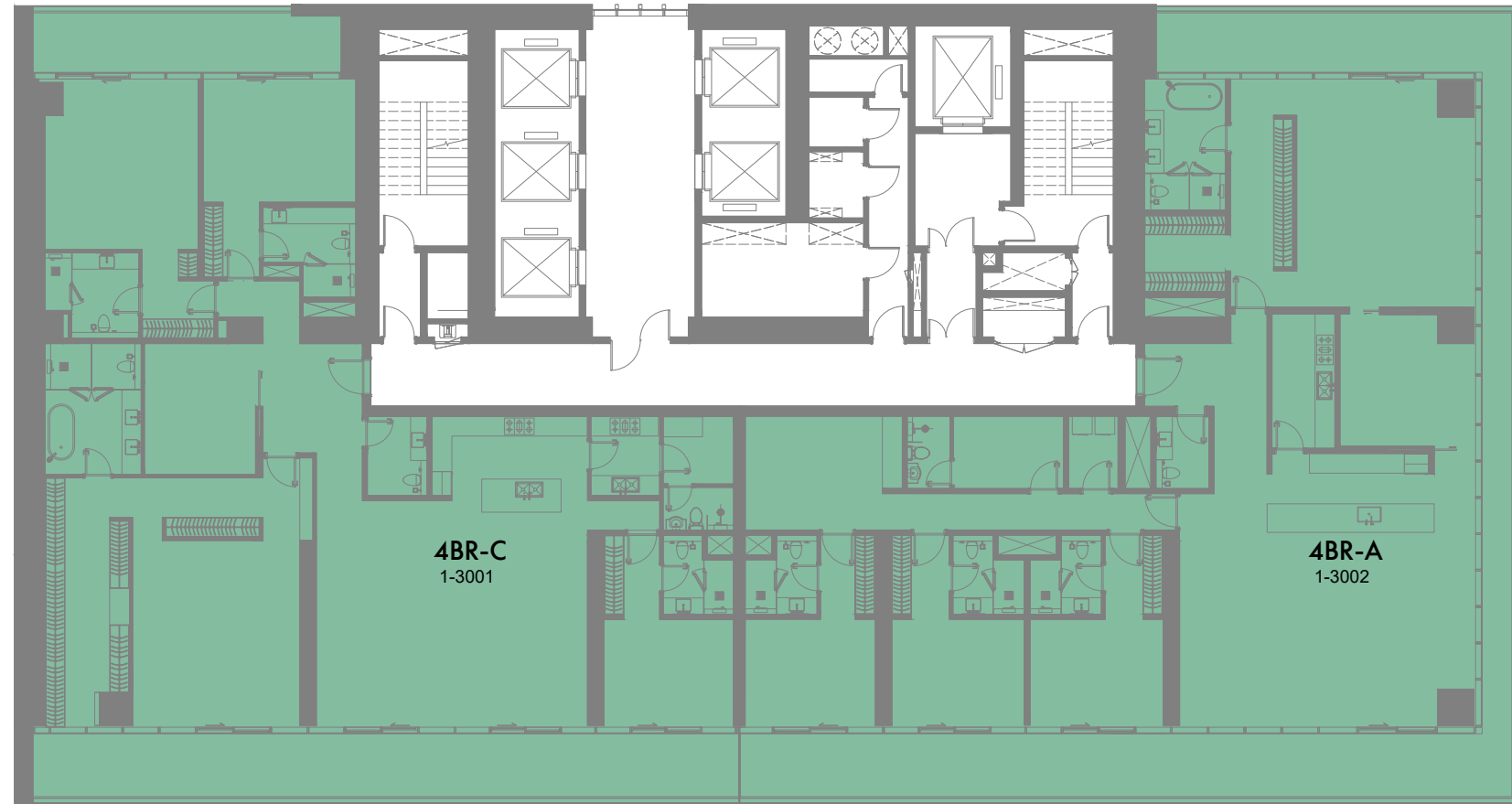
29th Floor Plan



1 Bedroom 2 Bedrooms 2 Bedrooms Duplex 3 Bedrooms 3 Bedrooms Duplex 4 Bedrooms 4 Bedrooms Duplex 5 Bedrooms Penthouse 5 Bedrooms Presidential

1-Measurements are indicative 'finish to finish' in Metric & Imperial excluding construction tolerance. 2-Plot/unit dimensions may vary from brochure, and unit types/plans may exist as mirrored versions; 3-All images used are for illustrative purposes only. 4-Unless stated otherwise, all fittings and interior decorative items shown are for illustrative purposes only. 5-The developer reserves the right to make alterations, at its absolute discretion, without any liability whatsoever up to the final 'as built' status.

30th to 31st and 33rd Floor Plan



32nd Floor Plan



1 Bedroom 2 Bedrooms 2 Bedrooms Duplex 3 Bedrooms 3 Bedrooms Duplex 4 Bedrooms 4 Bedrooms Duplex 5 Bedrooms Penthouse 5 Bedrooms Presidential

1-Measurements are indicative 'finish to finish' in Metric & Imperial excluding construction tolerance. 2-Plot/unit dimensions may vary from brochure, and unit types/plans may exist as mirrored versions; 3-All images used are for illustrative purposes only. 4-Unless stated otherwise, all fittings and interior decorative items shown are for illustrative purposes only. 5-The developer reserves the right to make alterations, at its absolute discretion, without any liability whatsoever up to the final 'as built' status.

1 Bedroom 2 Bedrooms 2 Bedrooms Duplex 3 Bedrooms 3 Bedrooms Duplex 4 Bedrooms 4 Bedrooms Duplex 5 Bedrooms Penthouse 5 Bedrooms Presidential

1-Measurements are indicative 'finish to finish' in Metric & Imperial excluding construction tolerance. 2-Plot/unit dimensions may vary from brochure, and unit types/plans may exist as mirrored versions; 3-All images used are for illustrative purposes only. 4-Unless stated otherwise, all fittings and interior decorative items shown are for illustrative purposes only. 5-The developer reserves the right to make alterations, at its absolute discretion, without any liability whatsoever up to the final 'as built' status.

34th to 36th Floor Plan



1 Bedroom
 2 Bedrooms
 2 Bedrooms Duplex
 3 Bedrooms
 3 Bedrooms Duplex
 4 Bedrooms
 4 Bedrooms Duplex
 5 Bedrooms Penthouse
 5 Bedrooms Presidential

1-Measurements are indicative 'finish to finish' in Metric & Imperial excluding construction tolerance. 2-Plot/unit dimensions may vary from brochure, and unit types/plans may exist as mirrored versions; 3-All images used are for illustrative purposes only. 4-Unless stated otherwise, all fittings and interior decorative items shown are for illustrative purposes only. 5-The developer reserves the right to make alterations, at its absolute discretion, without any liability whatsoever up to the final 'as built' status.

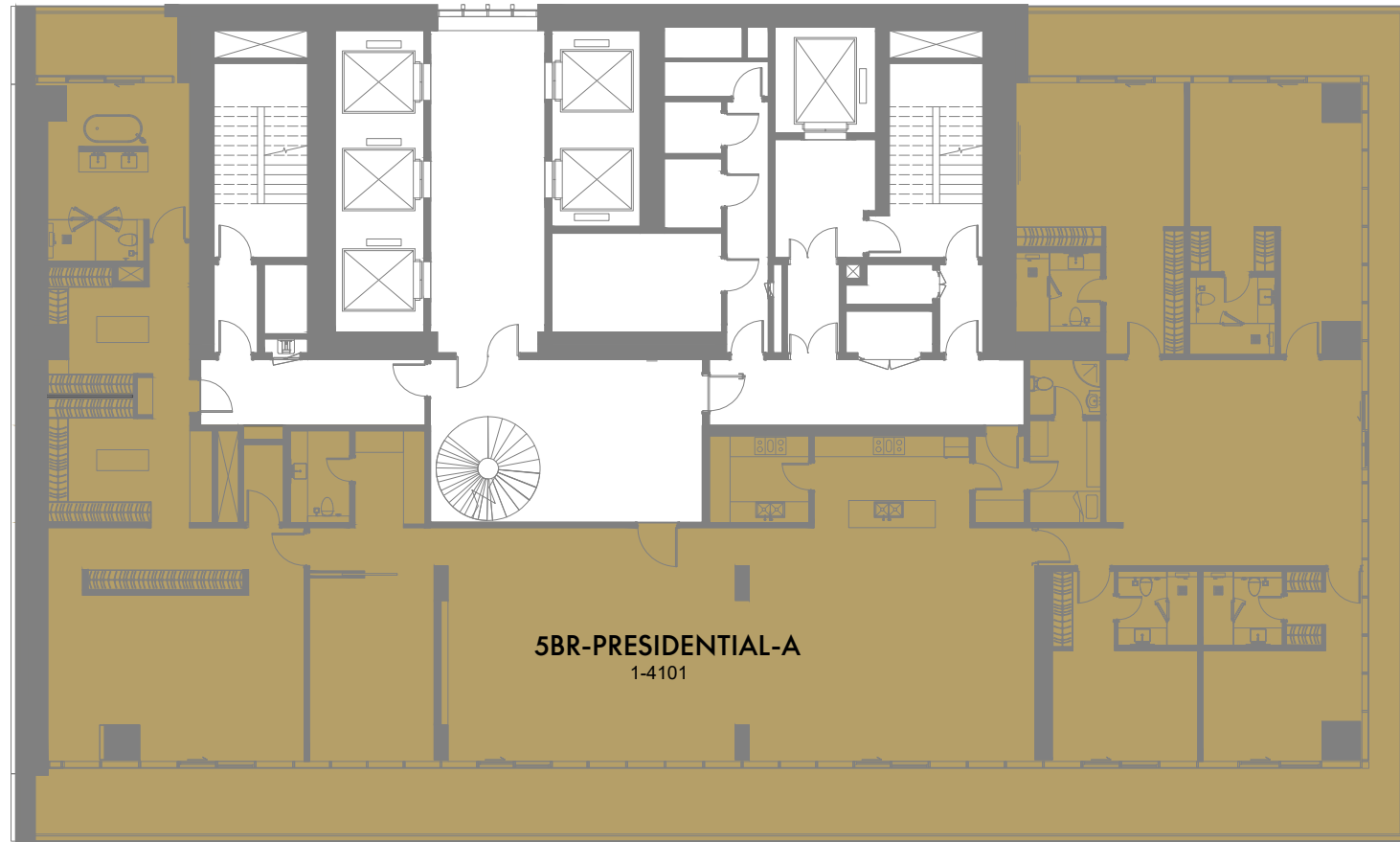
37th to 40th Floor Plan



1 Bedroom
 2 Bedrooms
 2 Bedrooms Duplex
 3 Bedrooms
 3 Bedrooms Duplex
 4 Bedrooms
 4 Bedrooms Duplex
 5 Bedrooms Penthouse
 5 Bedrooms Presidential

1-Measurements are indicative 'finish to finish' in Metric & Imperial excluding construction tolerance. 2-Plot/unit dimensions may vary from brochure, and unit types/plans may exist as mirrored versions; 3-All images used are for illustrative purposes only. 4-Unless stated otherwise, all fittings and interior decorative items shown are for illustrative purposes only. 5-The developer reserves the right to make alterations, at its absolute discretion, without any liability whatsoever up to the final 'as built' status.

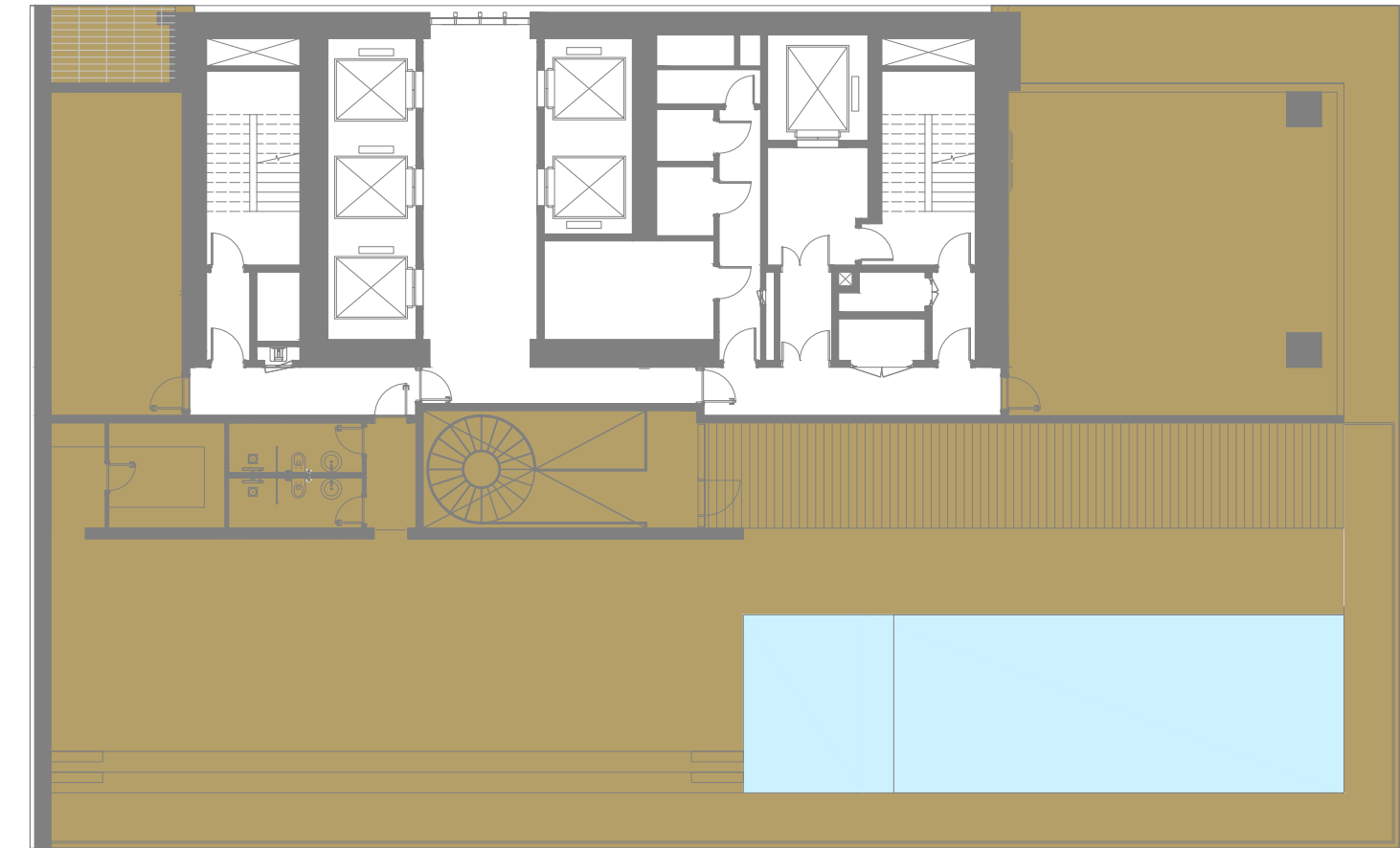
41st Presidential Suite Floor Plan



1 Bedroom 2 Bedrooms 2 Bedrooms Duplex 3 Bedrooms 3 Bedrooms Duplex 4 Bedrooms 4 Bedrooms Duplex 5 Bedrooms Penthouse 5 Bedrooms Presidential

1-Measurements are indicative 'finish to finish' in Metric & Imperial excluding construction tolerance. 2-Plot/unit dimensions may vary from brochure, and unit types/plans may exist as mirrored versions; 3-All images used are for illustrative purposes only. 4-Unless stated otherwise, all fittings and interior decorative items shown are for illustrative purposes only. 5-The developer reserves the right to make alterations, at its absolute discretion, without any liability whatsoever up to the final 'as built' status.

Presidential Suite Roof Top Floor Plan

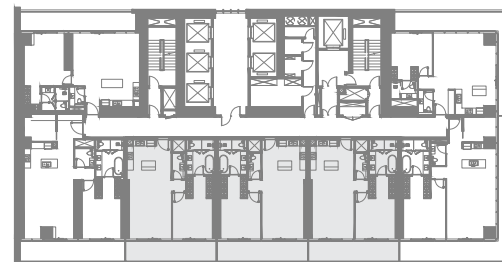
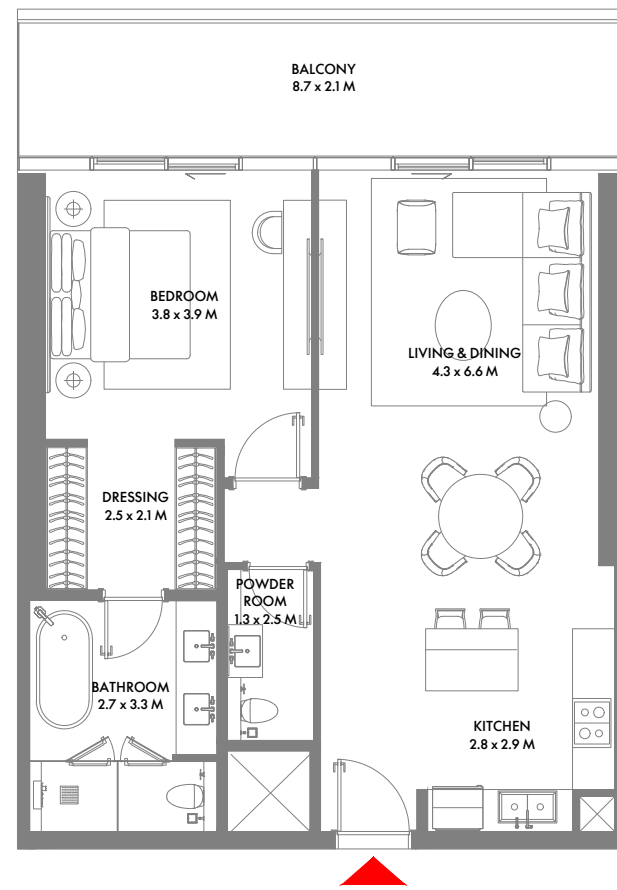


1 Bedroom 2 Bedrooms 2 Bedrooms Duplex 3 Bedrooms 3 Bedrooms Duplex 4 Bedrooms 4 Bedrooms Duplex 5 Bedrooms Penthouse 5 Bedrooms Presidential

1-Measurements are indicative 'finish to finish' in Metric & Imperial excluding construction tolerance. 2-Plot/unit dimensions may vary from brochure, and unit types/plans may exist as mirrored versions; 3-All images used are for illustrative purposes only. 4-Unless stated otherwise, all fittings and interior decorative items shown are for illustrative purposes only. 5-The developer reserves the right to make alterations, at its absolute discretion, without any liability whatsoever up to the final 'as built' status.

UNIT PLANS



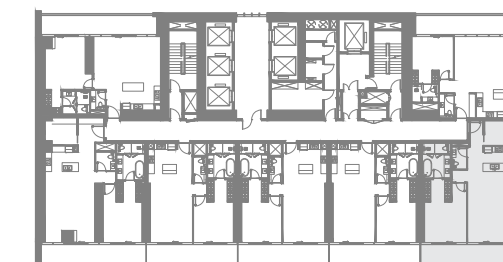
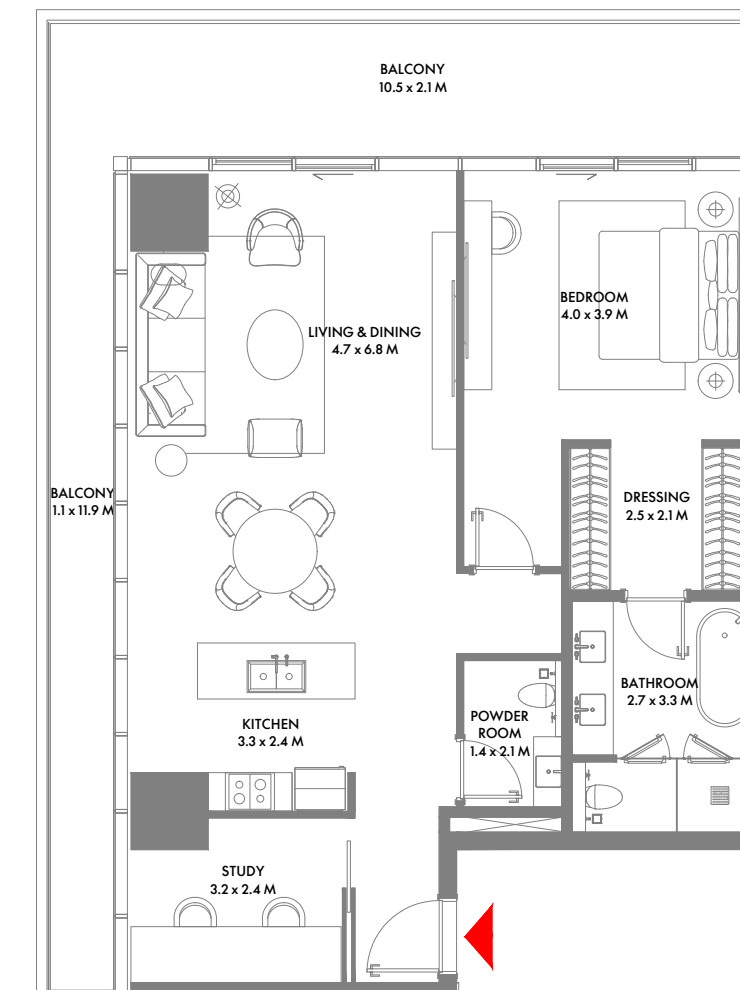


1ST TO 8TH FLOOR

1 Bedroom A

Unit Area: 81.78 Sqm (881 Sqft) | Balcony Area: 17.73 Sqm (191 Sqft) | Total Area: 99.51 Sqm (1,072 Sqft)

1-Measurements are indicative 'finish to finish' in Metric & Imperial excluding construction tolerance. 2-Plot/unit dimensions may vary from brochure, and unit types/plans may exist as mirrored versions; 3-All images used are for illustrative purposes only. 4-Unless stated otherwise, all fittings and interior decorative items shown are for illustrative purposes only. 5-The developer reserves the right to make alterations, at its absolute discretion, without any liability whatsoever up to the final 'as built' status.

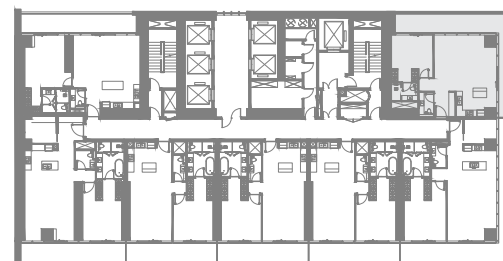
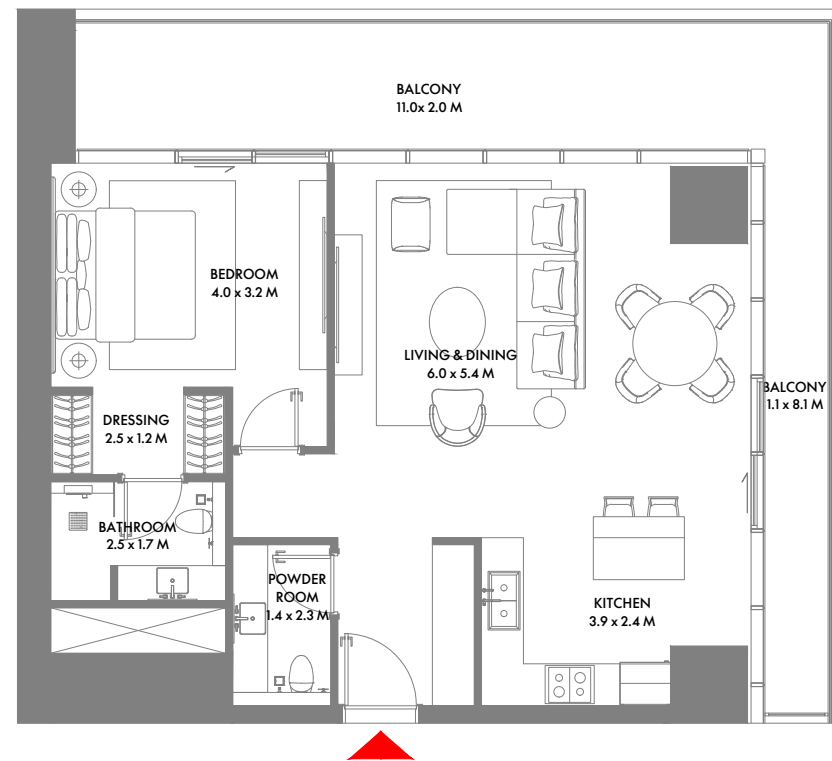


1ST TO 10TH FLOOR

1 Bedroom B

Unit Area: 99.03 Sqm (1,066 Sqft) | Balcony Area: 33.29 Sqm (359 Sqft) | Total Area: 132.32 Sqm (1,425 Sqft)

1-Measurements are indicative 'finish to finish' in Metric & Imperial excluding construction tolerance. 2-Plot/unit dimensions may vary from brochure, and unit types/plans may exist as mirrored versions; 3-All images used are for illustrative purposes only. 4-Unless stated otherwise, all fittings and interior decorative items shown are for illustrative purposes only. 5-The developer reserves the right to make alterations, at its absolute discretion, without any liability whatsoever up to the final 'as built' status.

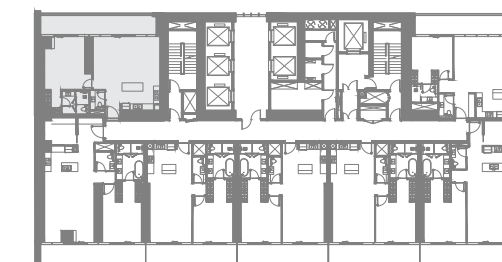
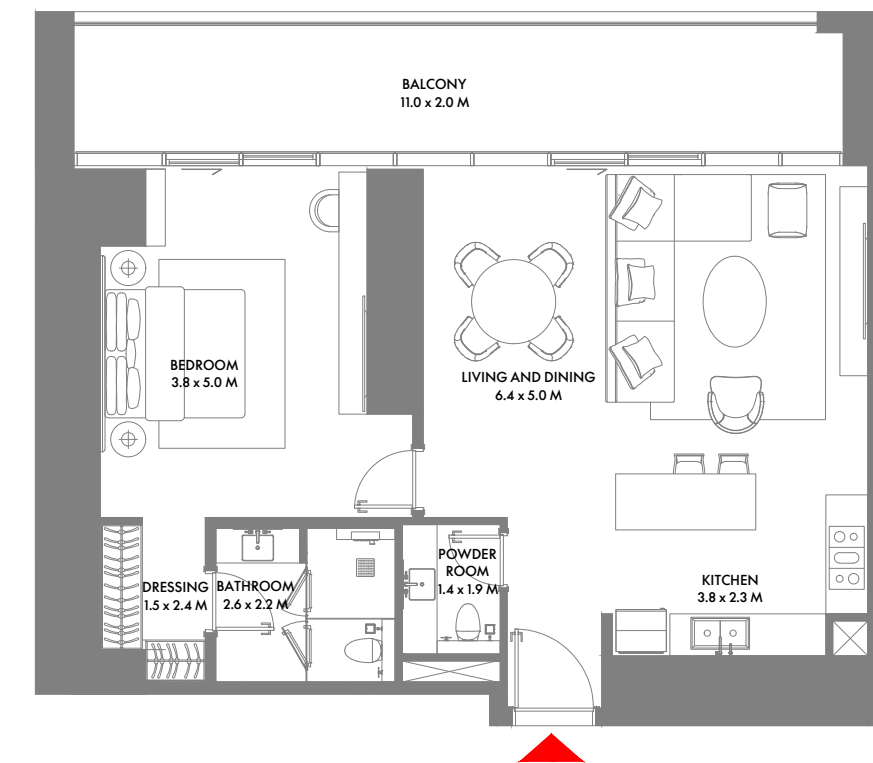


1ST TO 10TH FLOOR

1 Bedroom C

Unit Area: 79.34 Sqm (855 Sqft) | Balcony Area: 30.74 Sqm (331 Sqft) | Total Area: 110.08 Sqm (1,186 Sqft)

1-Measurements are indicative 'finish to finish' in Metric & Imperial excluding construction tolerance. 2-Plot/unit dimensions may vary from brochure, and unit types/plans may exist as mirrored versions; 3-All images used are for illustrative purposes only. 4-Unless stated otherwise, all fittings and interior decorative items shown are for illustrative purposes only. 5-The developer reserves the right to make alterations, at its absolute discretion, without any liability whatsoever up to the final 'as built' status.

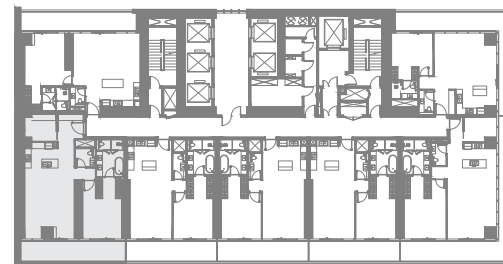
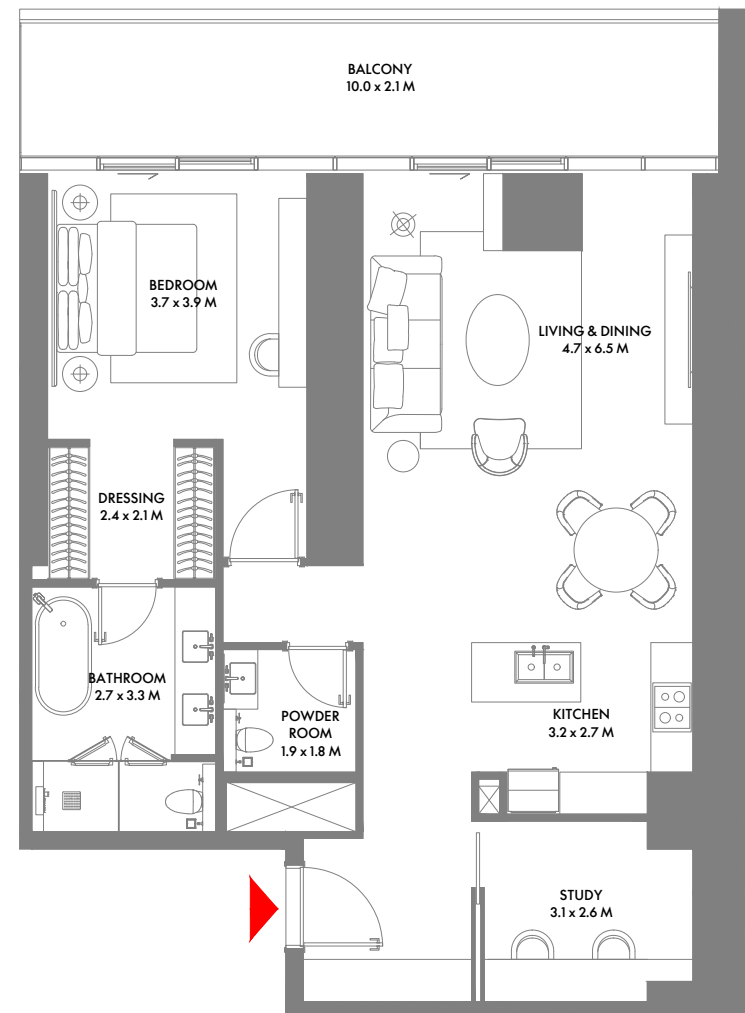


1ST TO 3RD FLOOR

1 Bedroom D

Unit Area: 99.05 Sqm (1,067 Sqft) | Balcony Area: 26.08 Sqm (281 Sqft) | Total Area: 125.13 Sqm (1,348 Sqft)

1-Measurements are indicative 'finish to finish' in Metric & Imperial excluding construction tolerance. 2-Plot/unit dimensions may vary from brochure, and unit types/plans may exist as mirrored versions; 3-All images used are for illustrative purposes only. 4-Unless stated otherwise, all fittings and interior decorative items shown are for illustrative purposes only. 5-The developer reserves the right to make alterations, at its absolute discretion, without any liability whatsoever up to the final 'as built' status.

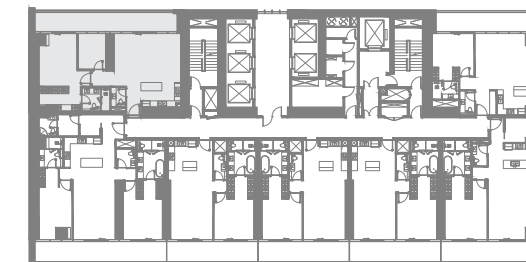
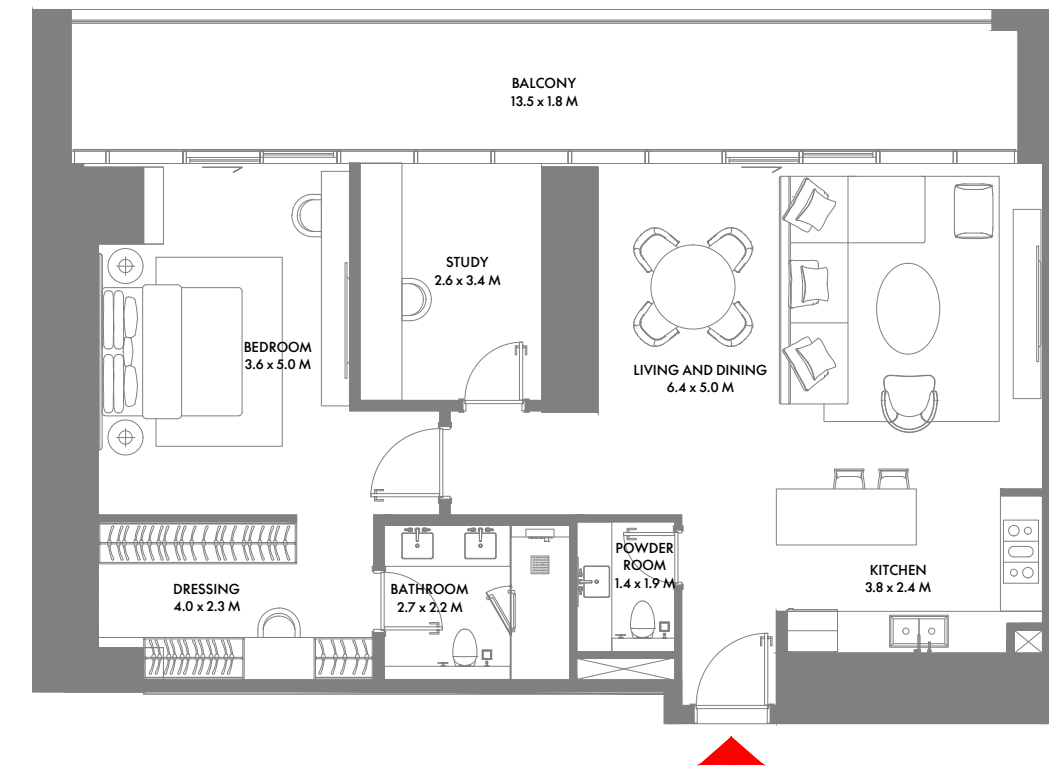


1ST & 2ND FLOOR

1 Bedroom E

Unit Area: 116.63 Sqm (1,256 Sqft) | Balcony Area: 22.09 Sqm (238 Sqft) | Total Area: 138.72 Sqm (1,494 Sqft)

1-Measurements are indicative 'finish to finish' in Metric & Imperial excluding construction tolerance. 2-Plot/unit dimensions may vary from brochure, and unit types/plans may exist as mirrored versions; 3-All images used are for illustrative purposes only. 4-Unless stated otherwise, all fittings and interior decorative items shown are for illustrative purposes only. 5-The developer reserves the right to make alterations, at its absolute discretion, without any liability whatsoever up to the final 'as built' status.

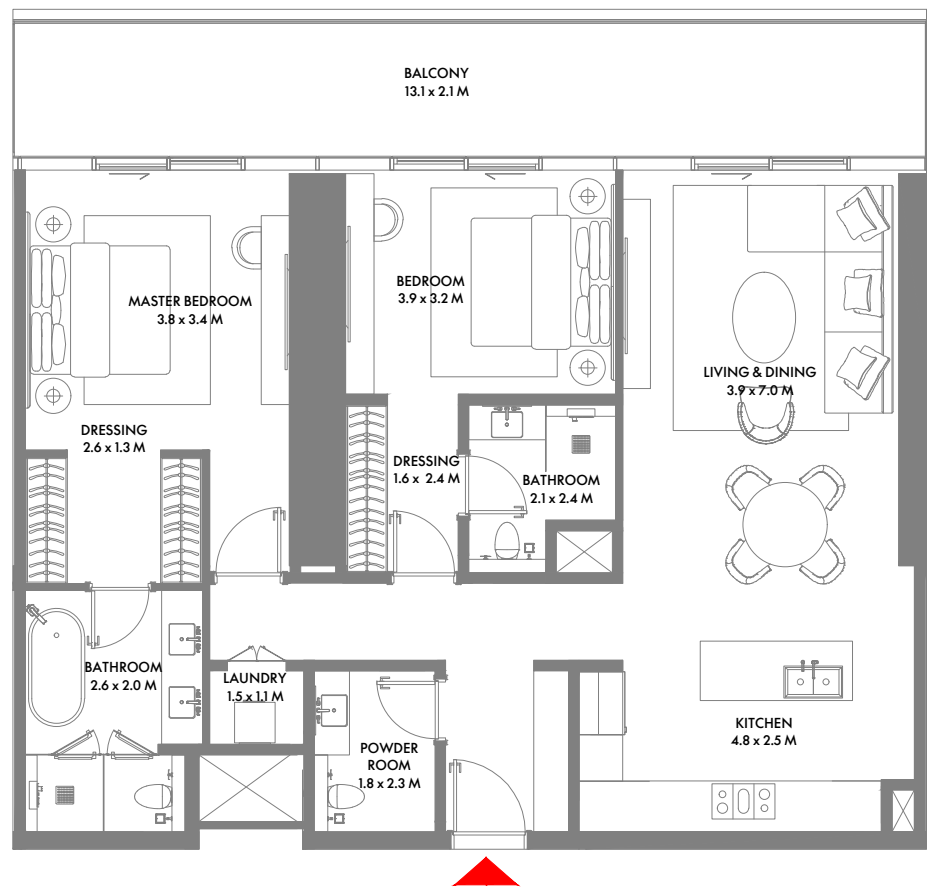


4TH & 22ND FLOOR

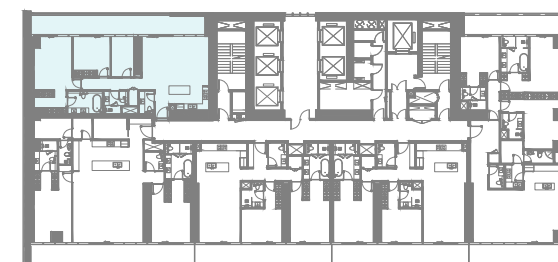
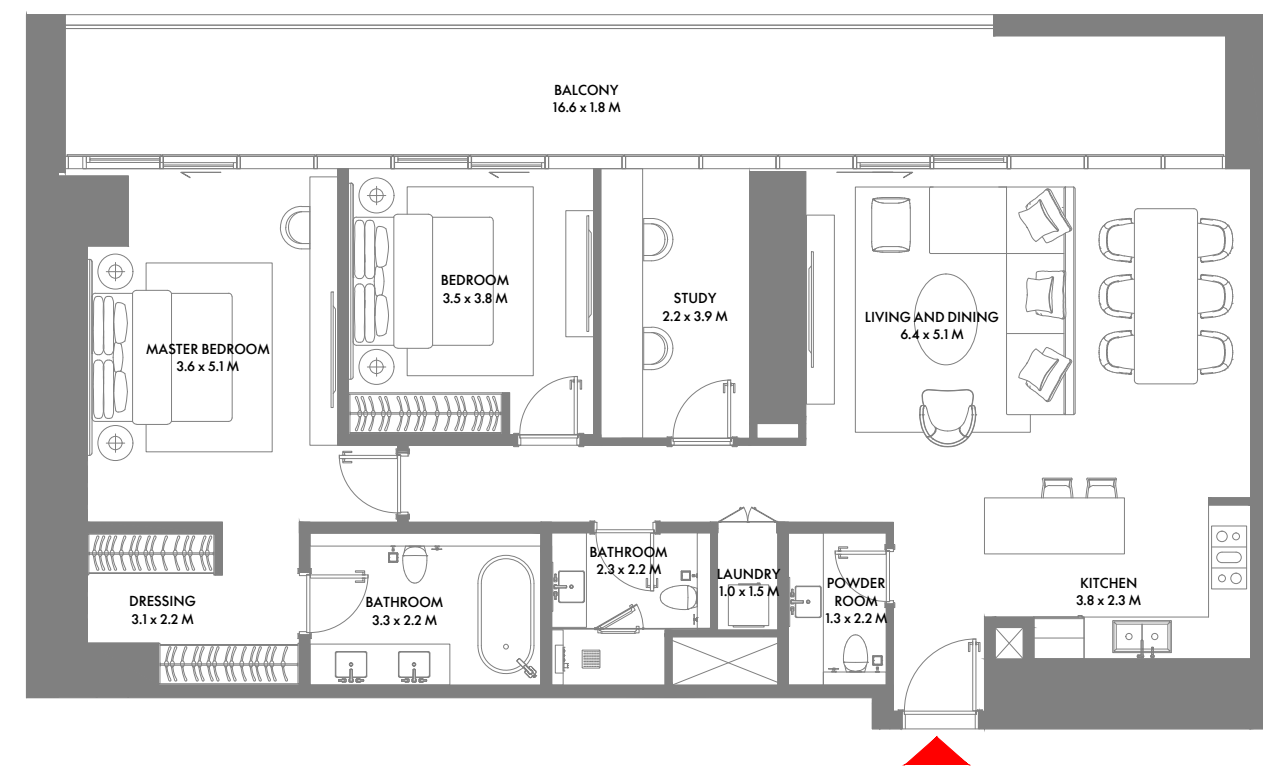
1 Bedroom F

Unit Area: 105.48 Sqm (1,136 Sqft) | Balcony Area: 27.71 Sqm (299 Sqft) | Total Area: 133.19 Sqm (1,435 Sqft)

1-Measurements are indicative 'finish to finish' in Metric & Imperial excluding construction tolerance. 2-Plot/unit dimensions may vary from brochure, and unit types/plans may exist as mirrored versions; 3-All images used are for illustrative purposes only. 4-Unless stated otherwise, all fittings and interior decorative items shown are for illustrative purposes only. 5-The developer reserves the right to make alterations, at its absolute discretion, without any liability whatsoever up to the final 'as built' status.



9TH, 14TH TO 27TH FLOOR



8TH & 14TH FLOOR
9TH, 14TH TO 21ST & 23RD TO 27TH FLOOR

2 Bedroom A

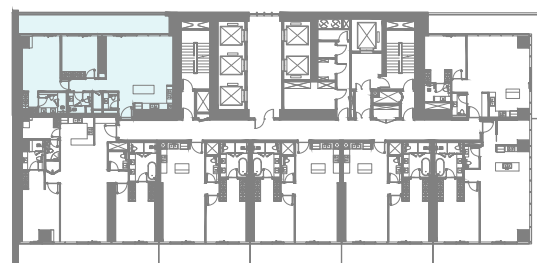
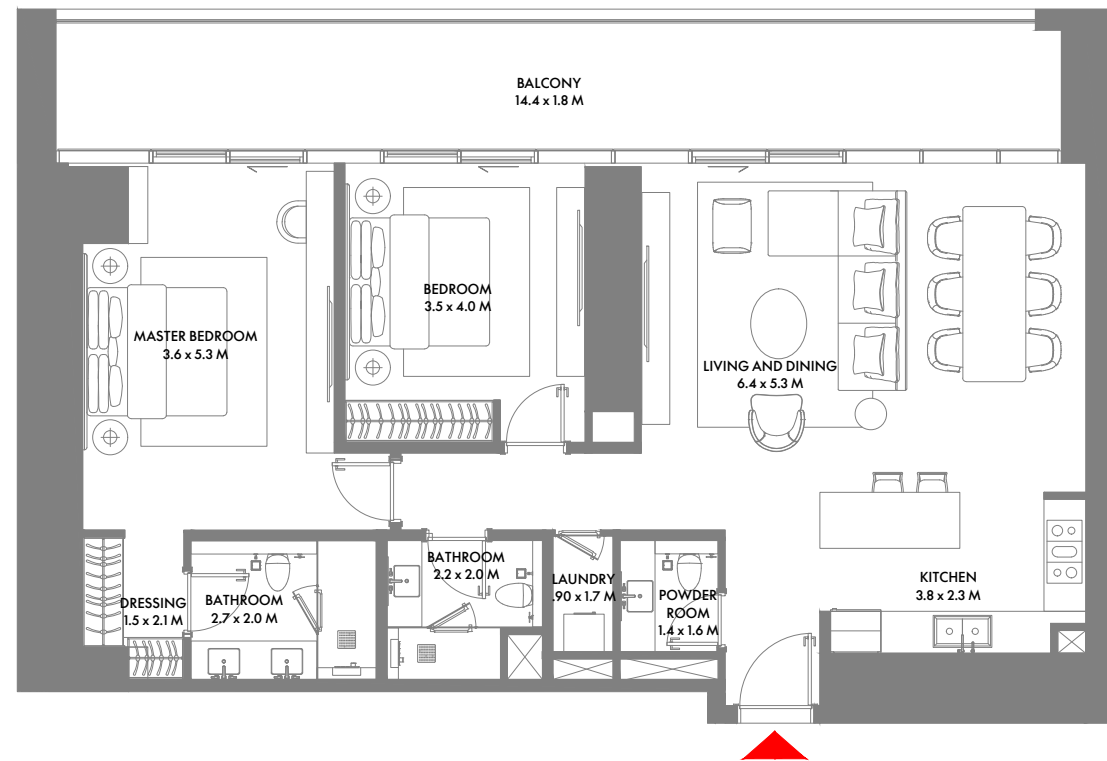
Unit Area: 122.80 Sqm (1,322 Sqft) | Balcony Area: 26.58 Sqm (287 Sqft) | Total Area: 149.38 Sqm (1,609 Sqft)

1-Measurements are indicative 'finish to finish' in Metric & Imperial excluding construction tolerance. 2-Plot/unit dimensions may vary from brochure, and unit types/plans may exist as mirrored versions; 3-All images used are for illustrative purposes only. 4-Unless stated otherwise, all fittings and interior decorative items shown are for illustrative purposes only. 5-The developer reserves the right to make alterations, at its absolute discretion, without any liability whatsoever up to the final 'as built' status.

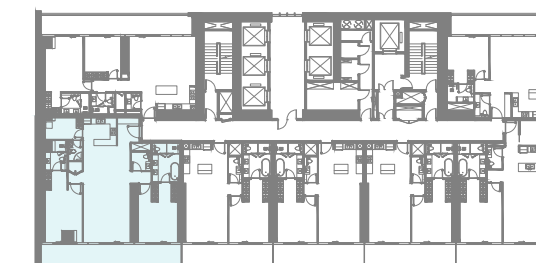
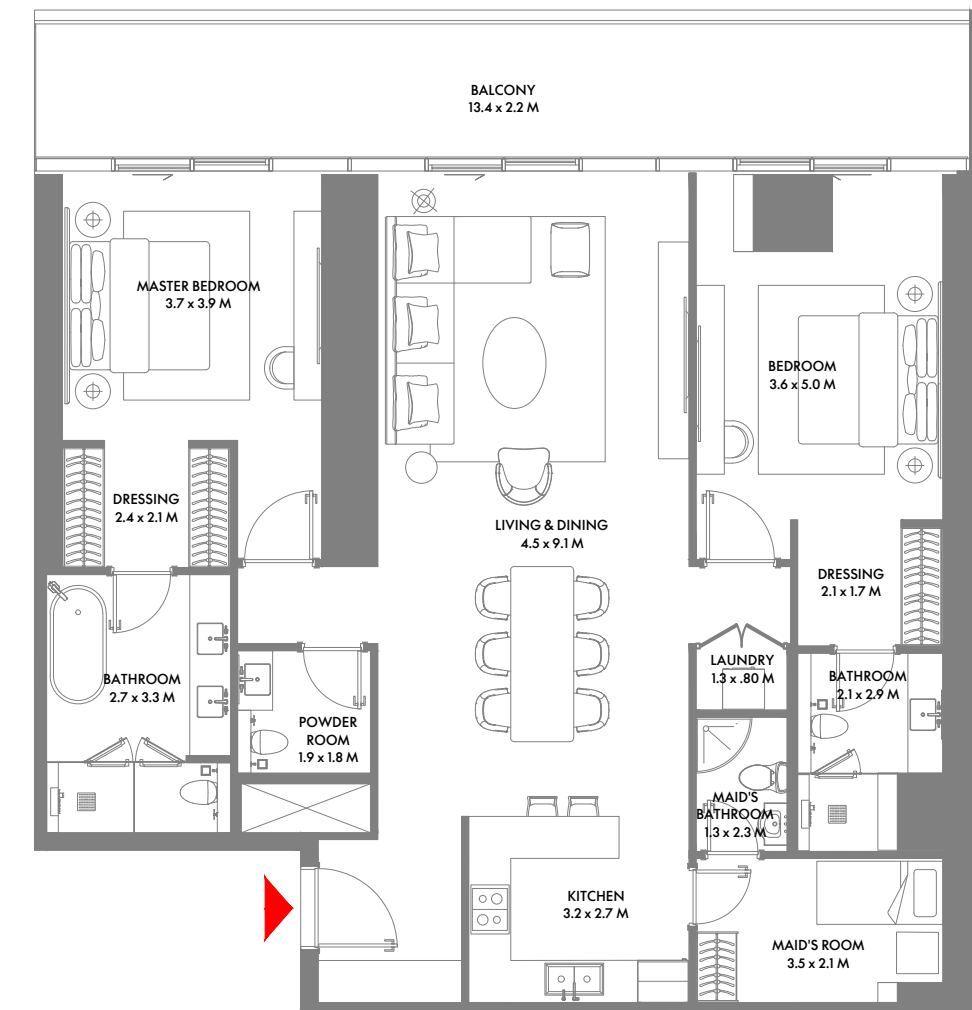
2 Bedroom B

Unit Area: 130.19 Sqm (1,402 Sqft) | Balcony Area: 34.21 Sqm (369 Sqft) | Total Area: 164.40 Sqm (1,771 Sqft)

1-Measurements are indicative 'finish to finish' in Metric & Imperial excluding construction tolerance. 2-Plot/unit dimensions may vary from brochure, and unit types/plans may exist as mirrored versions; 3-All images used are for illustrative purposes only. 4-Unless stated otherwise, all fittings and interior decorative items shown are for illustrative purposes only. 5-The developer reserves the right to make alterations, at its absolute discretion, without any liability whatsoever up to the final 'as built' status.



5TH TO 7TH & 15TH TO 21ST FLOOR



5TH TO 7TH & 15TH TO 20TH FLOOR

2 Bedroom C

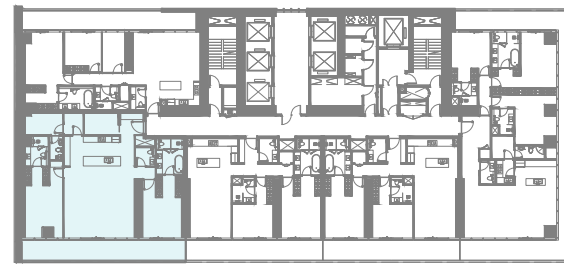
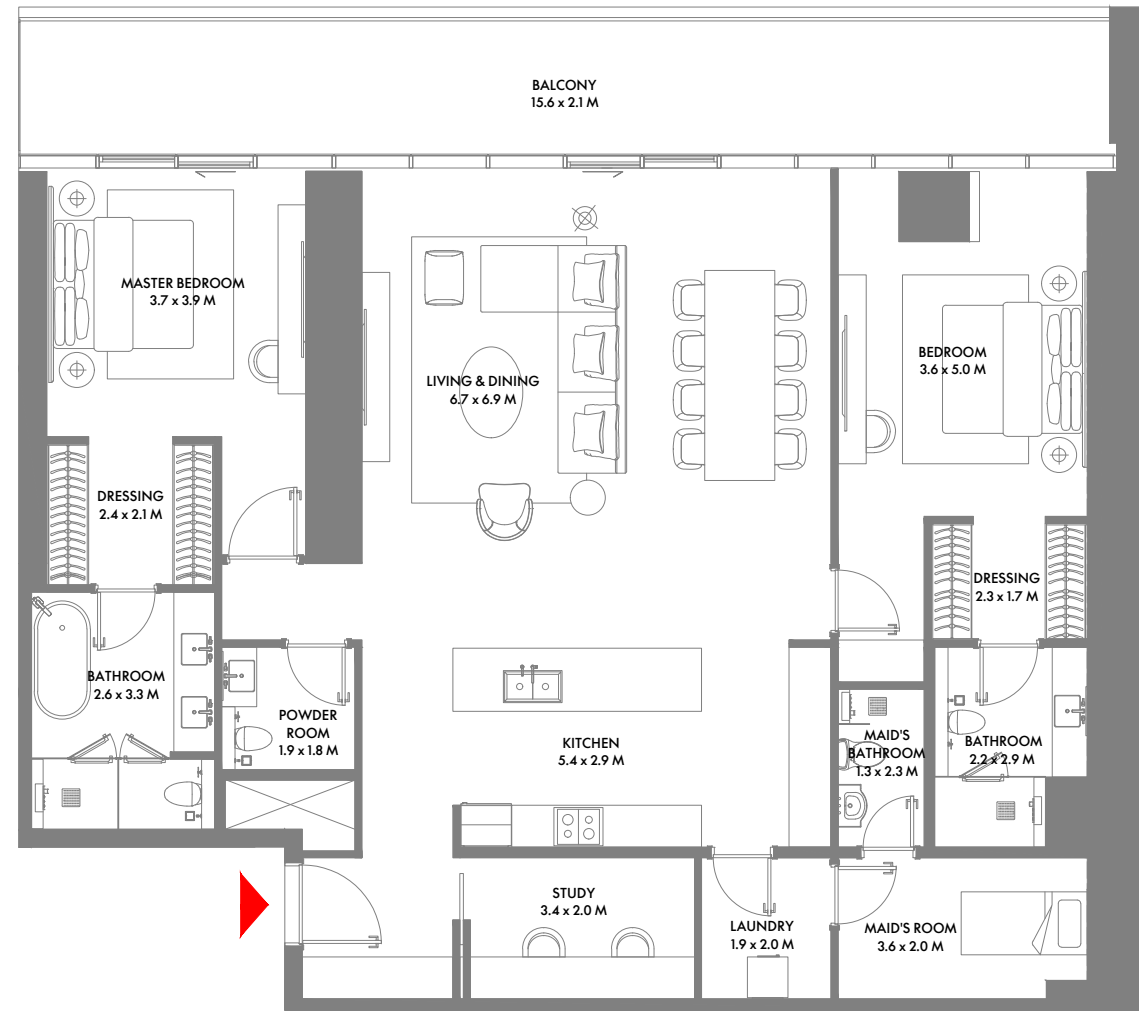
Unit Area: 125.62 Sqm (1,353 Sqft) | Balcony Area: 32.61 Sqm (352 Sqft) | Total Area: 158.23 Sqm (1,705 Sqft)

1-Measurements are indicative 'finish to finish' in Metric & Imperial excluding construction tolerance. 2-Plot/unit dimensions may vary from brochure, and unit types/plans may exist as mirrored versions; 3-All images used are for illustrative purposes only. 4-Unless stated otherwise, all fittings and interior decorative items shown are for illustrative purposes only. 5-The developer reserves the right to make alterations, at its absolute discretion, without any liability whatsoever up to the final 'as built' status.

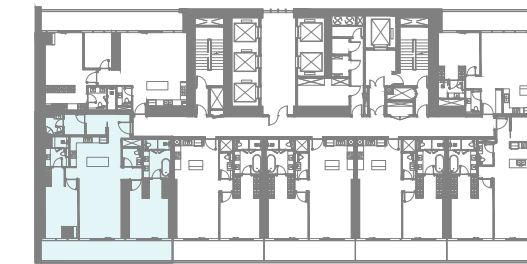
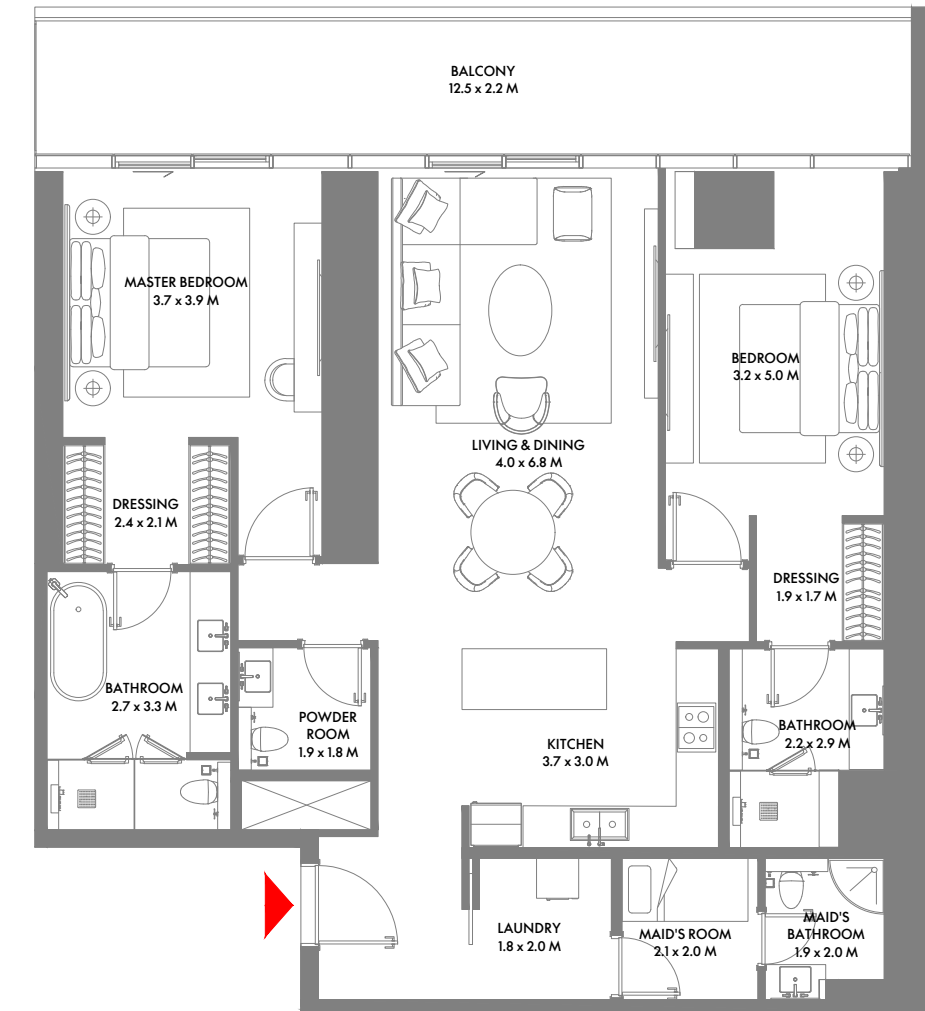
2 Bedroom D

Unit Area: 169.26 Sqm (1,822 Sqft) | Balcony Area: 30.82 Sqm (332 Sqft) | Total Area: 200.08 Sqm (2,154 Sqft)

1-Measurements are indicative 'finish to finish' in Metric & Imperial excluding construction tolerance. 2-Plot/unit dimensions may vary from brochure, and unit types/plans may exist as mirrored versions; 3-All images used are for illustrative purposes only. 4-Unless stated otherwise, all fittings and interior decorative items shown are for illustrative purposes only. 5-The developer reserves the right to make alterations, at its absolute discretion, without any liability whatsoever up to the final 'as built' status.



8TH & 14TH FLOOR



4TH FLOOR

2 Bedroom E

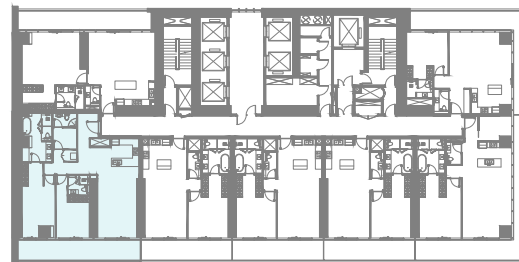
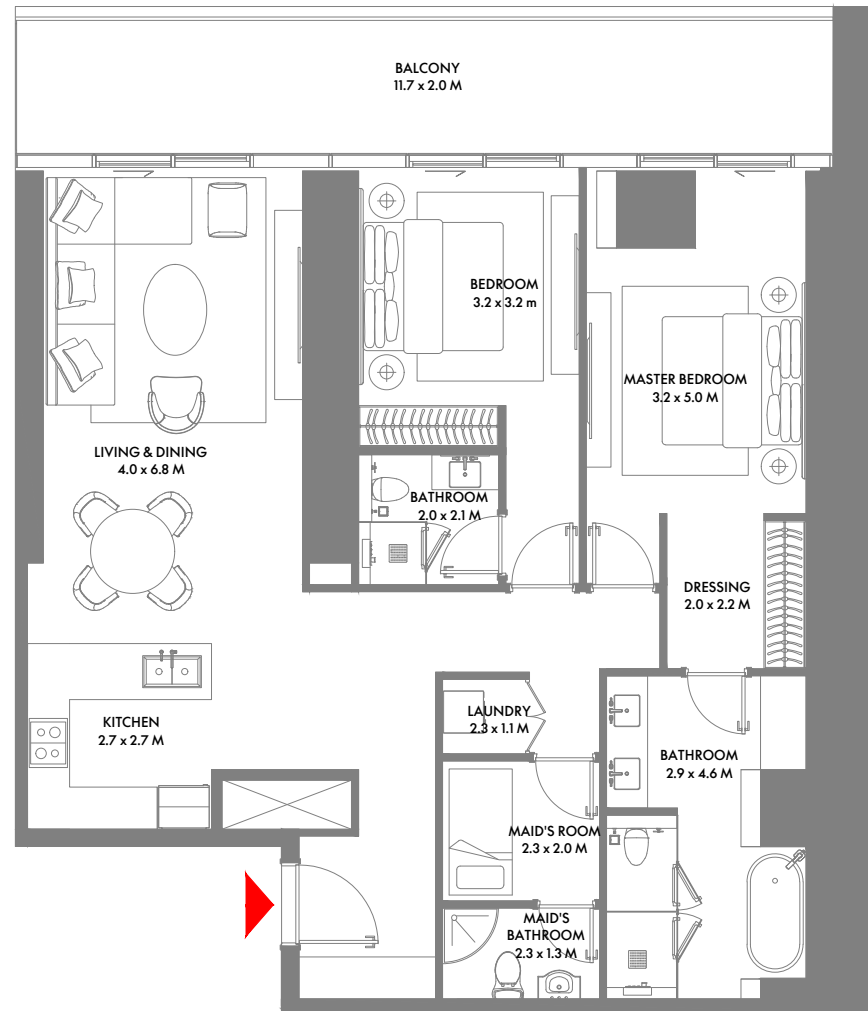
Unit Area: 177.66 Sqm (1,913 Sqft) | Balcony Area: 32.45 Sqm (350 Sqft) | Total Area: 210.11 Sqm (2,263 Sqft)

1-Measurements are indicative 'finish to finish' in Metric & Imperial excluding construction tolerance. 2-Plot/unit dimensions may vary from brochure, and unit types/plans may exist as mirrored versions; 3-All images used are for illustrative purposes only. 4-Unless stated otherwise, all fittings and interior decorative items shown are for illustrative purposes only. 5-The developer reserves the right to make alterations, at its absolute discretion, without any liability whatsoever up to the final 'as built' status.

2 Bedroom F

Unit Area: 137.12 Sqm (1,476 Sqft) | Balcony Area: 25.51 Sqm (275 Sqft) | Total Area: 162.63 Sqm (1,751 Sqft)

1-Measurements are indicative 'finish to finish' in Metric & Imperial excluding construction tolerance. 2-Plot/unit dimensions may vary from brochure, and unit types/plans may exist as mirrored versions; 3-All images used are for illustrative purposes only. 4-Unless stated otherwise, all fittings and interior decorative items shown are for illustrative purposes only. 5-The developer reserves the right to make alterations, at its absolute discretion, without any liability whatsoever up to the final 'as built' status.

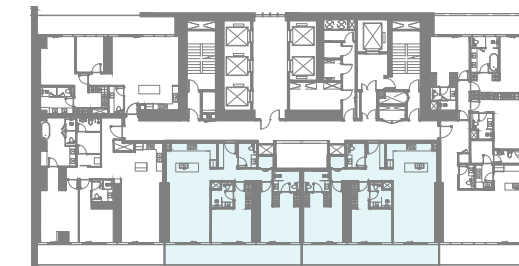
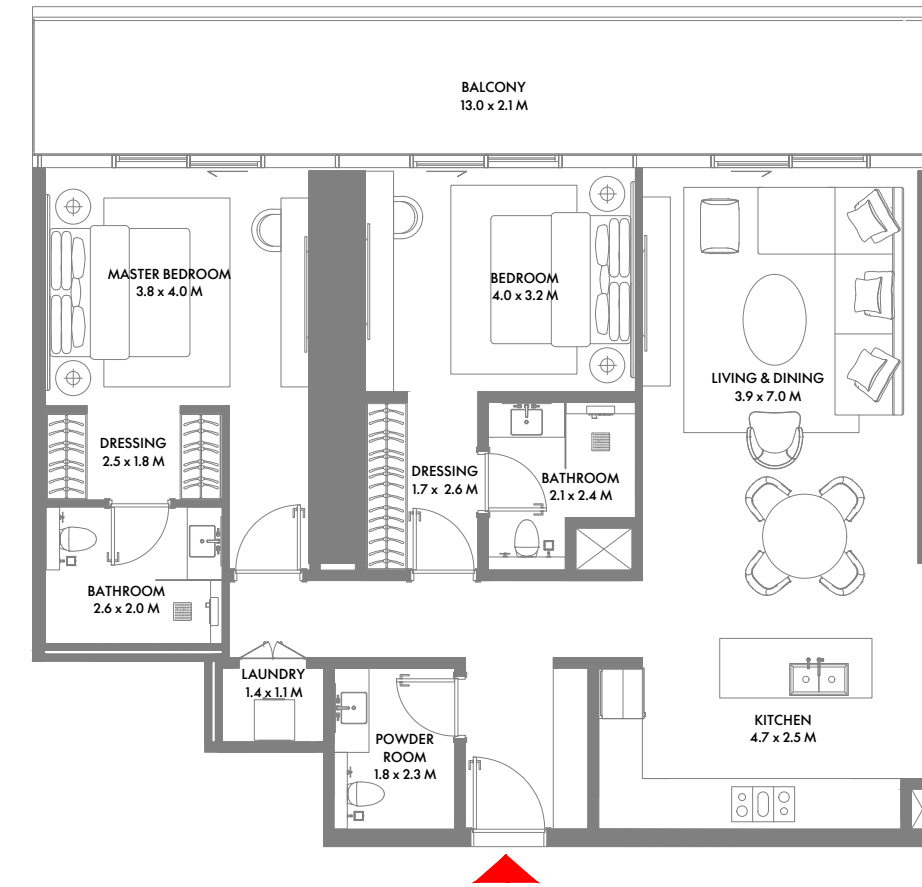


3RD & 22ND FLOOR

2 Bedroom G

Unit Area: 132.49 Sqm (1,427 Sqft) | Balcony Area: 24.64 Sqm (266 Sqft) | Total Area: 157.13 Sqm (1,693 Sqft)

1-Measurements are indicative 'finish to finish' in Metric & Imperial excluding construction tolerance. 2-Plot/unit dimensions may vary from brochure, and unit types/plans may exist as mirrored versions; 3-All images used are for illustrative purposes only. 4-Unless stated otherwise, all fittings and interior decorative items shown are for illustrative purposes only. 5-The developer reserves the right to make alterations, at its absolute discretion, without any liability whatsoever up to the final 'as built' status.

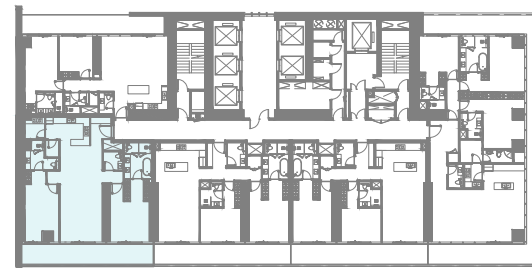
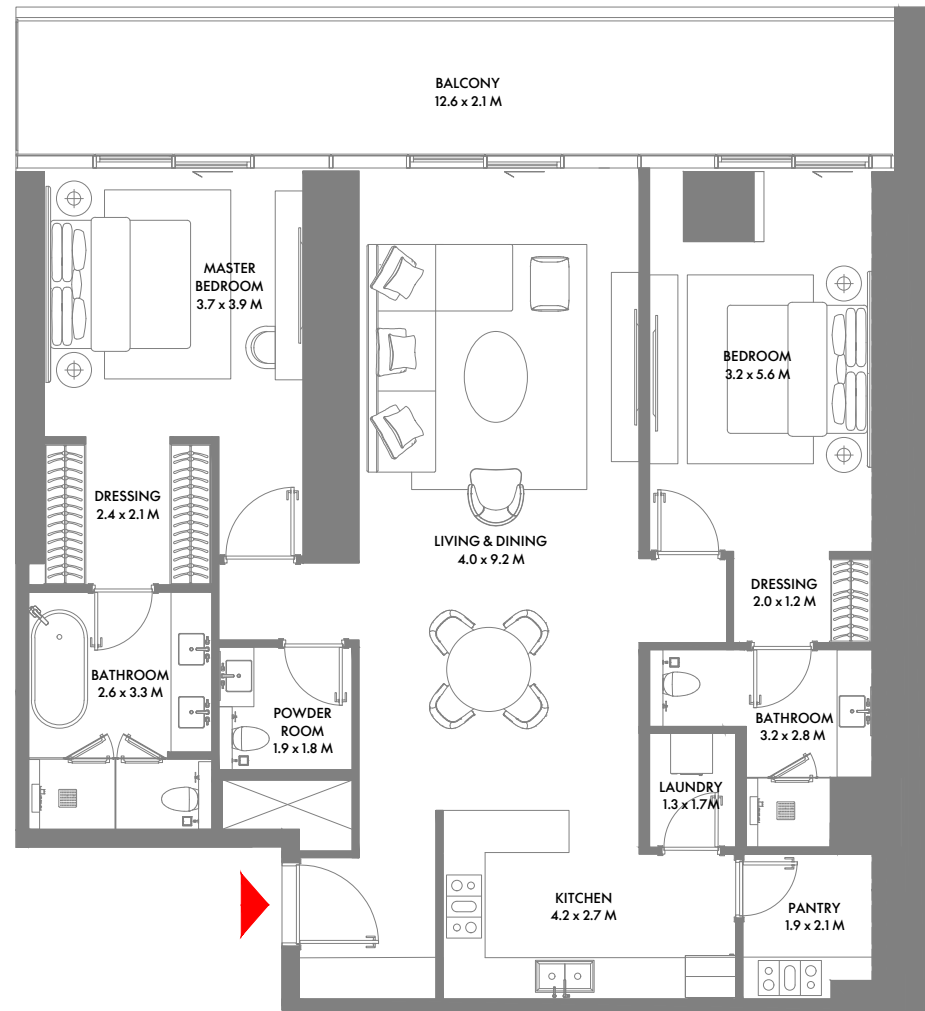


10TH & 22ND FLOOR

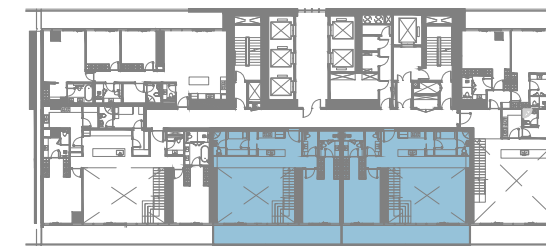
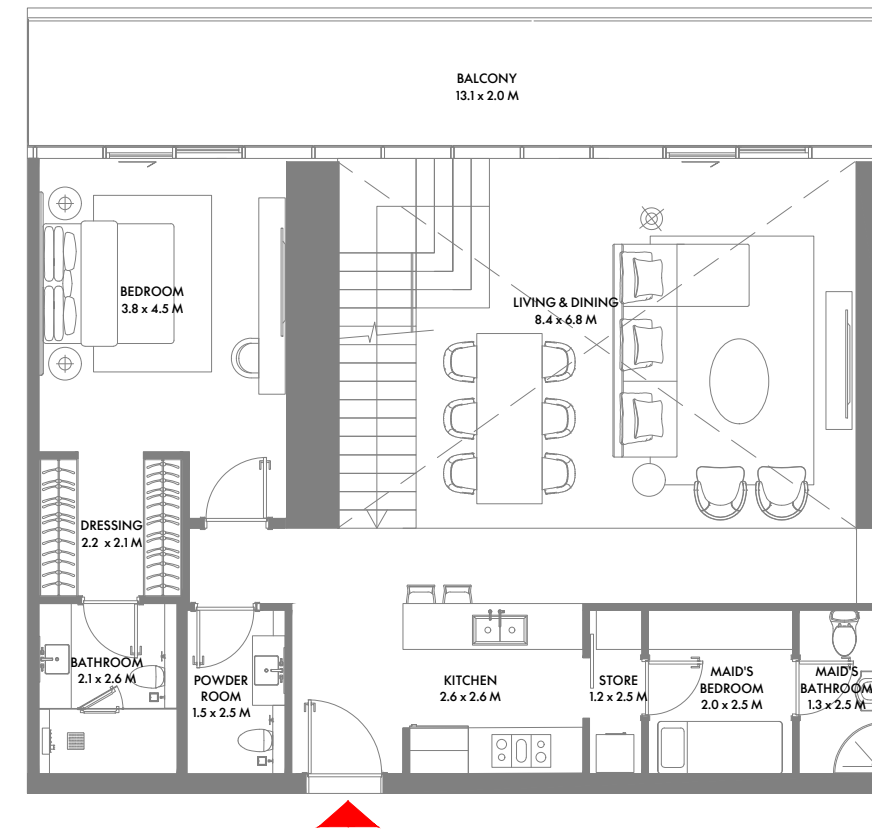
2 Bedroom H

Unit Area: 116.20 Sqm (1,251 Sqft) | Balcony Area: 26.58 Sqm (287 Sqft) | Total Area: 142.78 Sqm (1,538 Sqft)

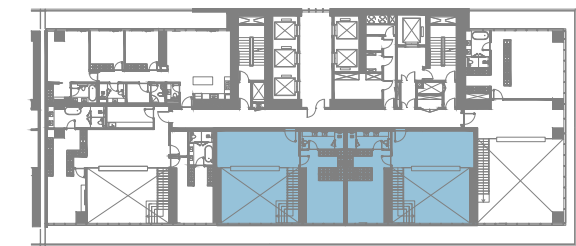
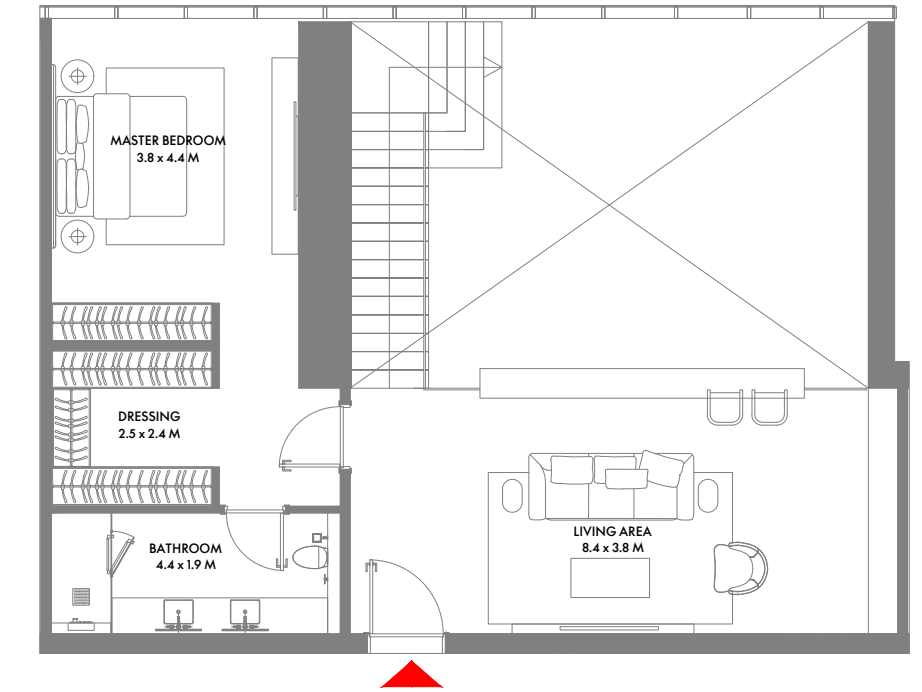
1-Measurements are indicative 'finish to finish' in Metric & Imperial excluding construction tolerance. 2-Plot/unit dimensions may vary from brochure, and unit types/plans may exist as mirrored versions; 3-All images used are for illustrative purposes only. 4-Unless stated otherwise, all fittings and interior decorative items shown are for illustrative purposes only. 5-The developer reserves the right to make alterations, at its absolute discretion, without any liability whatsoever up to the final 'as built' status.



21ST FLOOR



11TH FLOOR



12TH FLOOR

2 Bedroom I

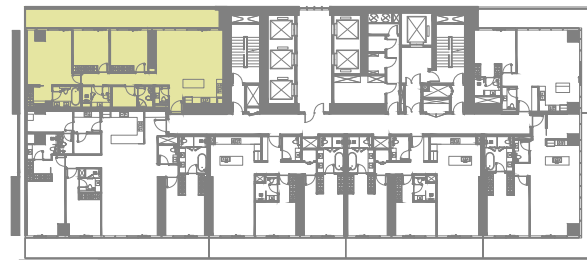
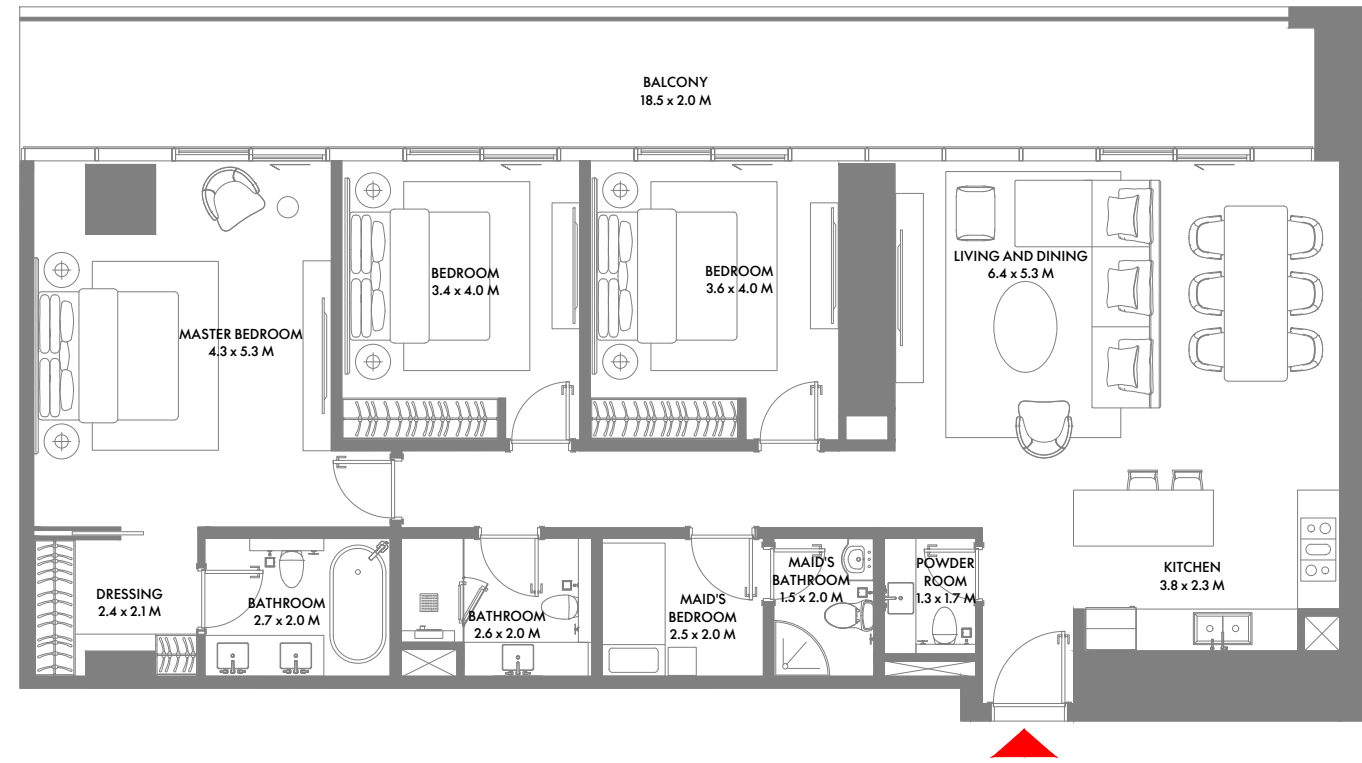
Unit Area: 137.74 Sqm (1,483 Sqft) | Balcony Area: 25.52 Sqm (275 Sqft) | Total Area: 163.26 Sqm (1,758 Sqft)

1-Measurements are indicative 'finish to finish' in Metric & Imperial excluding construction tolerance. 2-Plot/unit dimensions may vary from brochure, and unit types/plans may exist as mirrored versions; 3-All images used are for illustrative purposes only. 4-Unless stated otherwise, all fittings and interior decorative items shown are for illustrative purposes only. 5-The developer reserves the right to make alterations, at its absolute discretion, without any liability whatsoever up to the final 'as built' status.

2 Bedroom Duplex A

Unit Area: 254.67 Sqm (2,742 Sqft) | Balcony Area: 26.56 Sqm (286 Sqft) | Total Area: 281.23 Sqm (3,028 Sqft)

1-Measurements are indicative 'finish to finish' in Metric & Imperial excluding construction tolerance. 2-Plot/unit dimensions may vary from brochure, and unit types/plans may exist as mirrored versions; 3-All images used are for illustrative purposes only. 4-Unless stated otherwise, all fittings and interior decorative items shown are for illustrative purposes only. 5-The developer reserves the right to make alterations, at its absolute discretion, without any liability whatsoever up to the final 'as built' status.

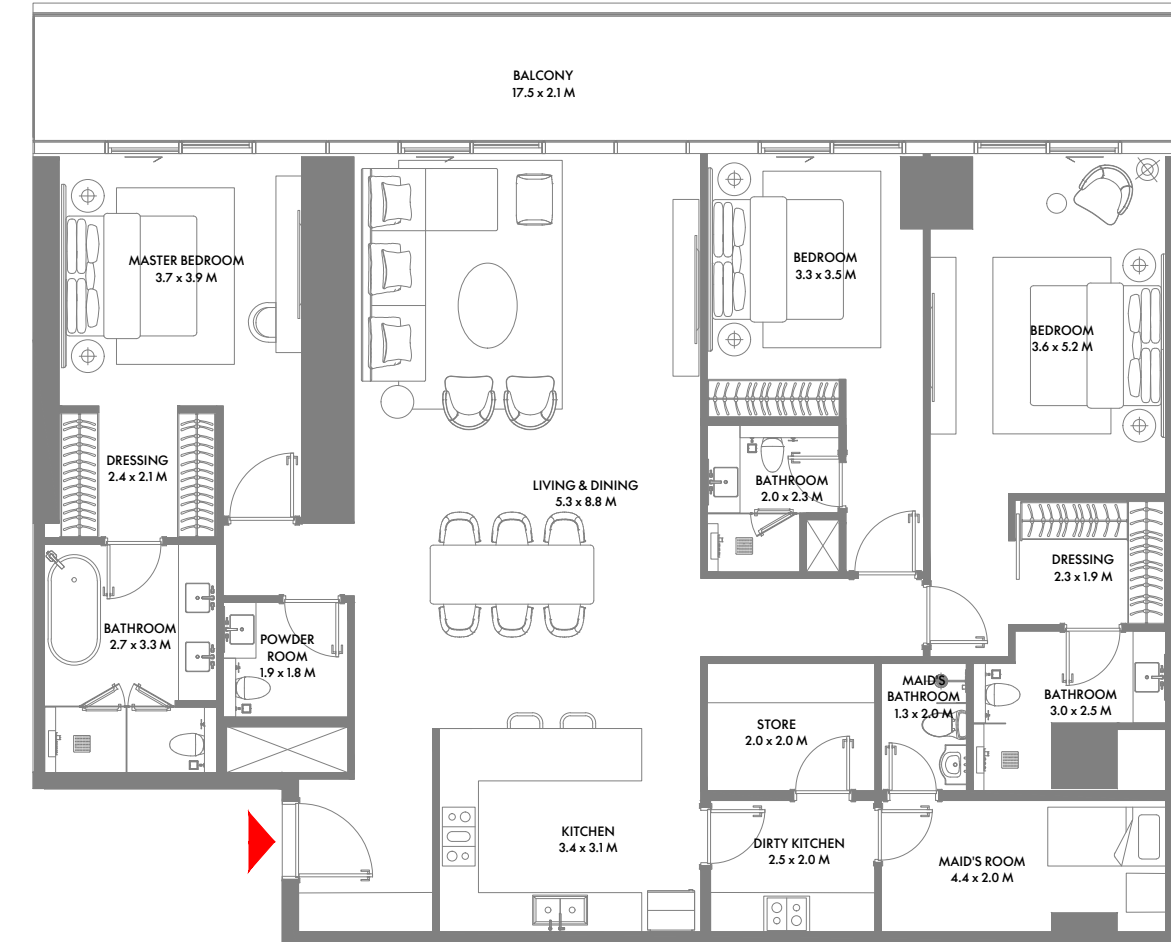


9TH TO 12TH FLOOR

3 Bedroom A

Unit Area: 145.30 Sqm (1,565 Sqft) | Balcony Area: 37.28 Sqm (402 Sqft) | Total Area: 182.58 Sqm (1,967 Sqft)

1-Measurements are indicative 'finish to finish' in Metric & Imperial excluding construction tolerance. 2-Plot/unit dimensions may vary from brochure, and unit types/plans may exist as mirrored versions; 3-All images used are for illustrative purposes only. 4-Unless stated otherwise, all fittings and interior decorative items shown are for illustrative purposes only. 5-The developer reserves the right to make alterations, at its absolute discretion, without any liability whatsoever up to the final 'as built' status.

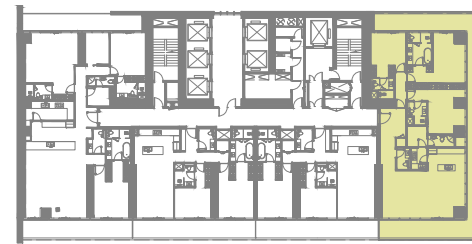


9TH & 10TH FLOOR

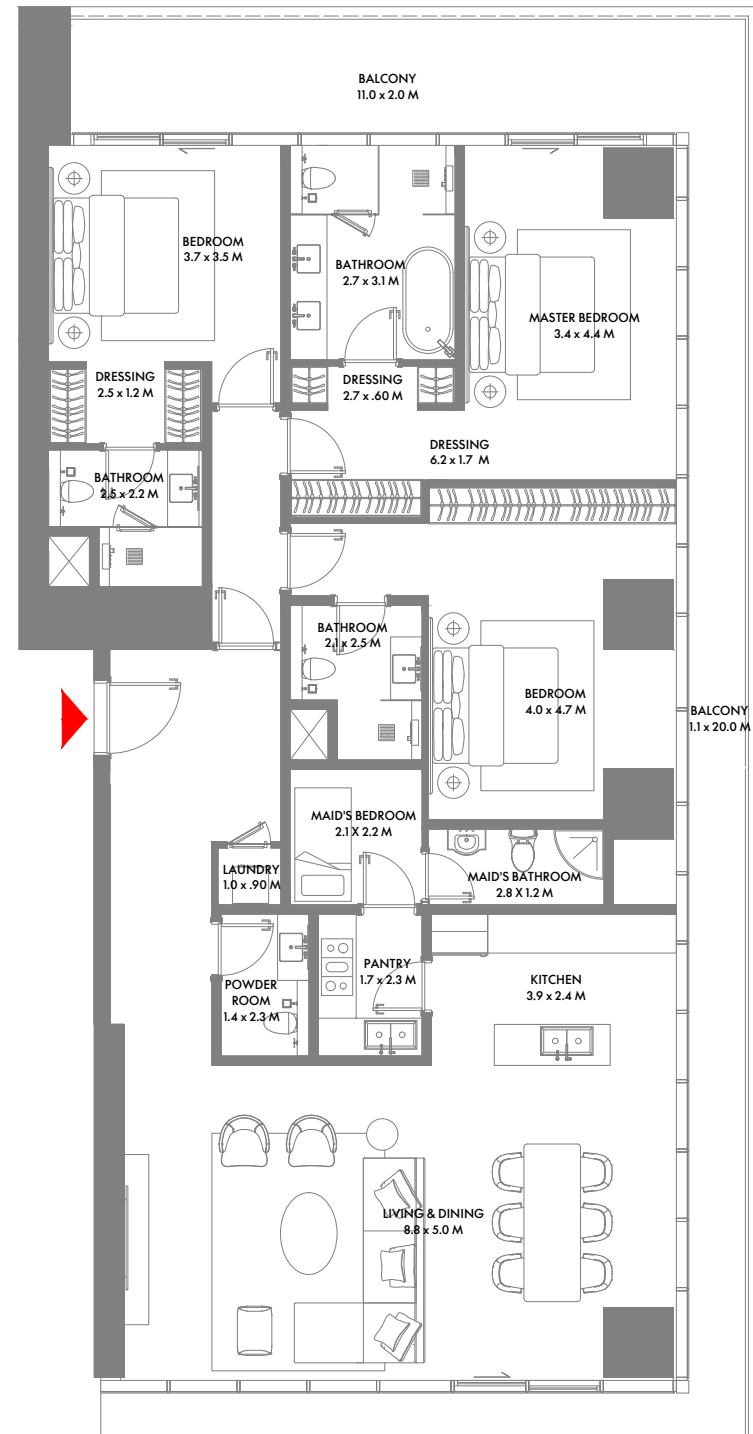
3 Bedroom B

Unit Area: 199.51 Sqm (2,148 Sqft) | Balcony Area: 35.57 Sqm (383 Sqft) | Total Area: 235.08 Sqm (2,531 Sqft)

1-Measurements are indicative 'finish to finish' in Metric & Imperial excluding construction tolerance. 2-Plot/unit dimensions may vary from brochure, and unit types/plans may exist as mirrored versions; 3-All images used are for illustrative purposes only. 4-Unless stated otherwise, all fittings and interior decorative items shown are for illustrative purposes only. 5-The developer reserves the right to make alterations, at its absolute discretion, without any liability whatsoever up to the final 'as built' status.



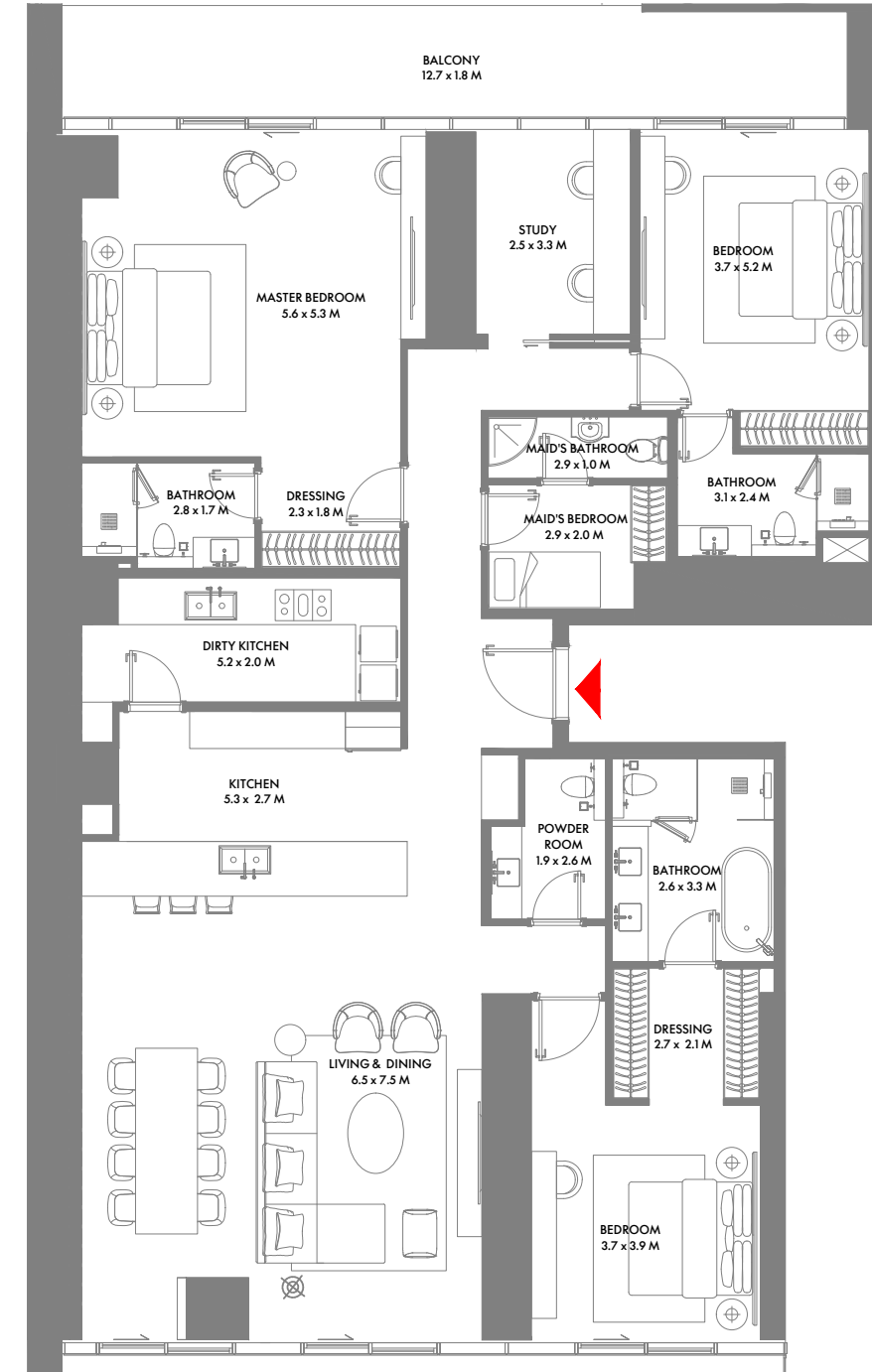
14TH TO 27TH FLOOR



3 Bedroom C

Unit Area: 190.83 Sqm (2,055 Sqft) | Balcony Area: 64.02 Sqm (690 Sqft) | Total Area: 254.85 Sqm (2,745 Sqft)

1-Measurements are indicative 'finish to finish' in Metric & Imperial excluding construction tolerance. 2-Plot/unit dimensions may vary from brochure, and unit types/plans may exist as mirrored versions; 3-All images used are for illustrative purposes only. 4-Unless stated otherwise, all fittings and interior decorative items shown are for illustrative purposes only. 5-The developer reserves the right to make alterations, at its absolute discretion, without any liability whatsoever up to the final 'as built' status.

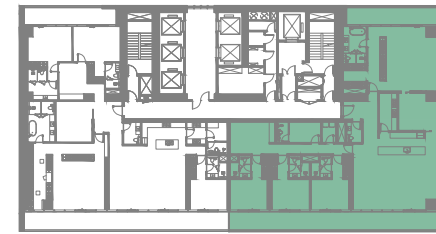
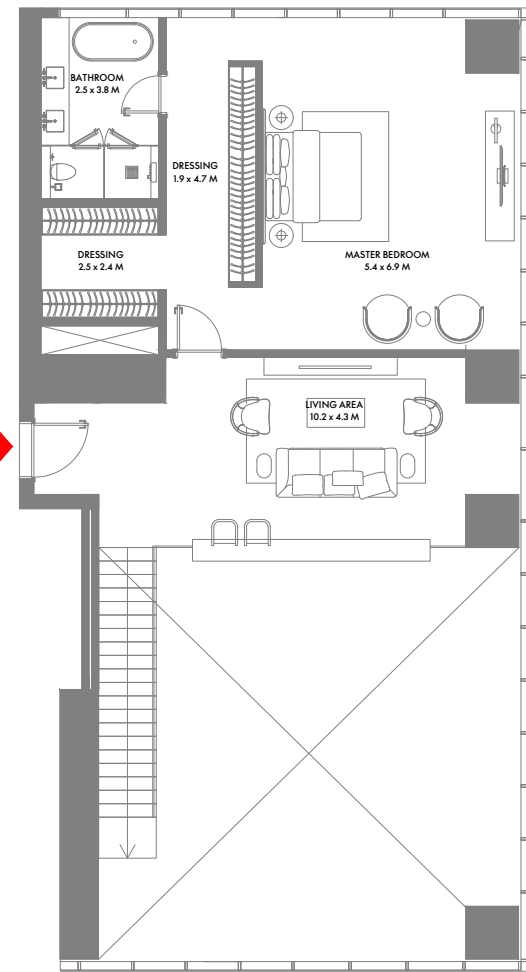
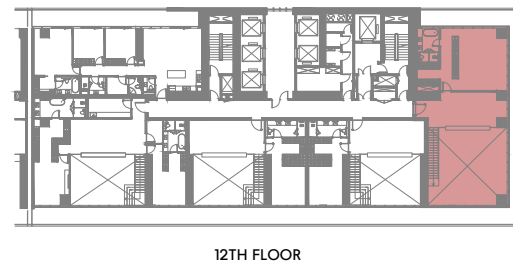
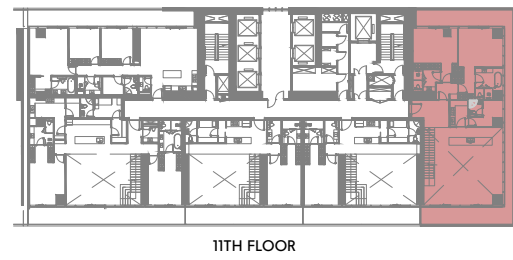
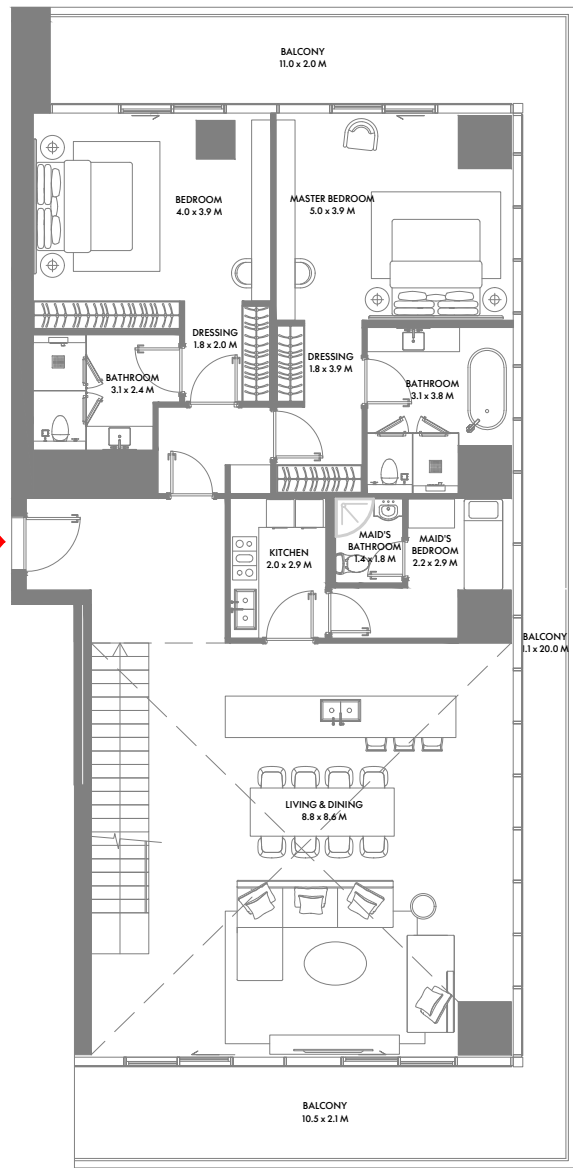


23RD TO 27TH FLOOR

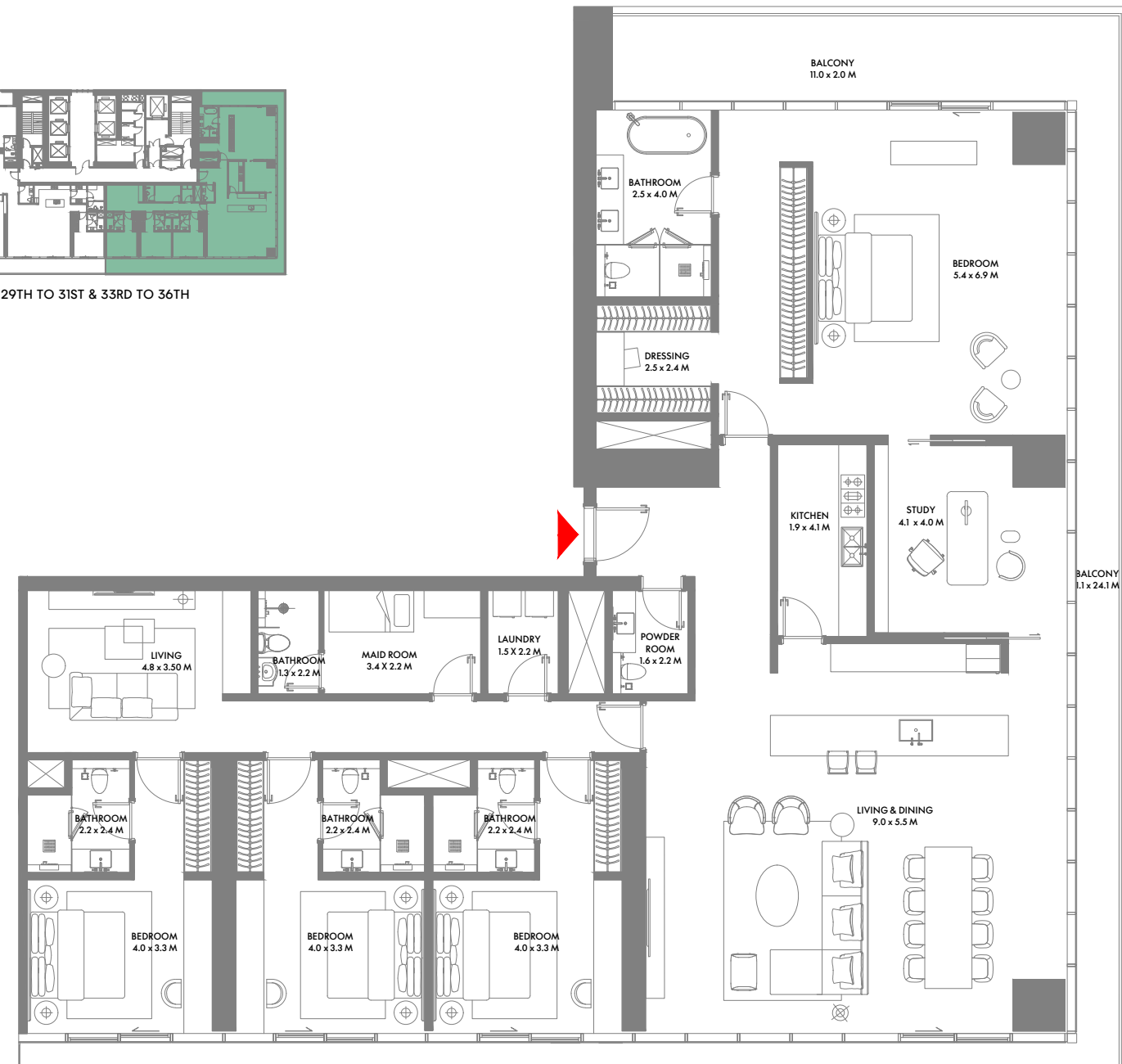
3 Bedroom D

Unit Area: 229.96 Sqm (2,476 Sqft) | Balcony Area: 49.66 Sqm (535 Sqft) | Total Area: 279.62 Sqm (3,011 Sqft)

1-Measurements are indicative 'finish to finish' in Metric & Imperial excluding construction tolerance. 2-Plot/unit dimensions may vary from brochure, and unit types/plans may exist as mirrored versions; 3-All images used are for illustrative purposes only. 4-Unless stated otherwise, all fittings and interior decorative items shown are for illustrative purposes only. 5-The developer reserves the right to make alterations, at its absolute discretion, without any liability whatsoever up to the final 'as built' status.



29TH TO 31ST & 33RD TO 36TH



3 Bedroom Duplex A

Unit Area: 385.67 Sqm (4,152 Sqft) | Balcony Area: 64.03 Sqm (690 Sqft) | Total Area: 449.70 Sqm (4,842 Sqft)

1-Measurements are indicative 'finish to finish' in Metric & Imperial excluding construction tolerance. 2-Plot/unit dimensions may vary from brochure, and unit types/plans may exist as mirrored versions; 3-All images used are for illustrative purposes only. 4-Unless stated otherwise, all fittings and interior decorative items shown are for illustrative purposes only. 5-The developer reserves the right to make alterations, at its absolute discretion, without any liability whatsoever up to the final 'as built' status.

4 Bedroom A

Unit Area: 313.86 Sqm (3,379 Sqft) | Balcony Area: 90.53 Sqm (975 Sqft) | Total Area: 404.39 Sqm (4,354 Sqft)

1-Measurements are indicative 'finish to finish' in Metric & Imperial excluding construction tolerance. 2-Plot/unit dimensions may vary from brochure, and unit types/plans may exist as mirrored versions; 3-All images used are for illustrative purposes only. 4-Unless stated otherwise, all fittings and interior decorative items shown are for illustrative purposes only. 5-The developer reserves the right to make alterations, at its absolute discretion, without any liability whatsoever up to the final 'as built' status.



4 Bedroom B

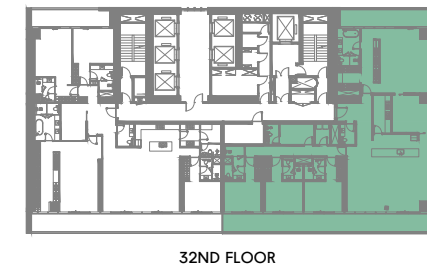
Unit Area: 309.98 Sqm (3,337 Sqft) | Balcony Area: 64.87 Sqm (699 Sqft) | Total Area: 374.85 Sqm (4,036 Sqft)

1-Measurements are indicative 'finish to finish' in Metric & Imperial excluding construction tolerance. 2-Plot/unit dimensions may vary from brochure, and unit types/plans may exist as mirrored versions; 3-All images used are for illustrative purposes only. 4-Unless stated otherwise, all fittings and interior decorative items shown are for illustrative purposes only. 5-The developer reserves the right to make alterations, at its absolute discretion, without any liability whatsoever up to the final 'as built' status.

4 Bedroom C

Unit Area: 299.87 Sqm (3,228 Sqft) | Balcony Area: 62.96 Sqm (678 Sqft) | Total Area: 362.83 Sqm (3,906 Sqft)

1-Measurements are indicative 'finish to finish' in Metric & Imperial excluding construction tolerance. 2-Plot/unit dimensions may vary from brochure, and unit types/plans may exist as mirrored versions; 3-All images used are for illustrative purposes only. 4-Unless stated otherwise, all fittings and interior decorative items shown are for illustrative purposes only. 5-The developer reserves the right to make alterations, at its absolute discretion, without any liability whatsoever up to the final 'as built' status.



4 Bedroom D

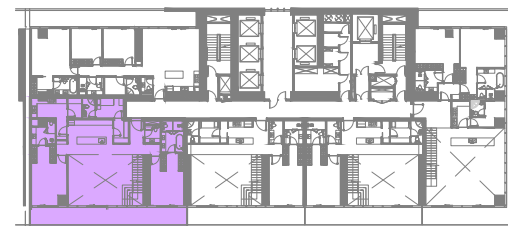
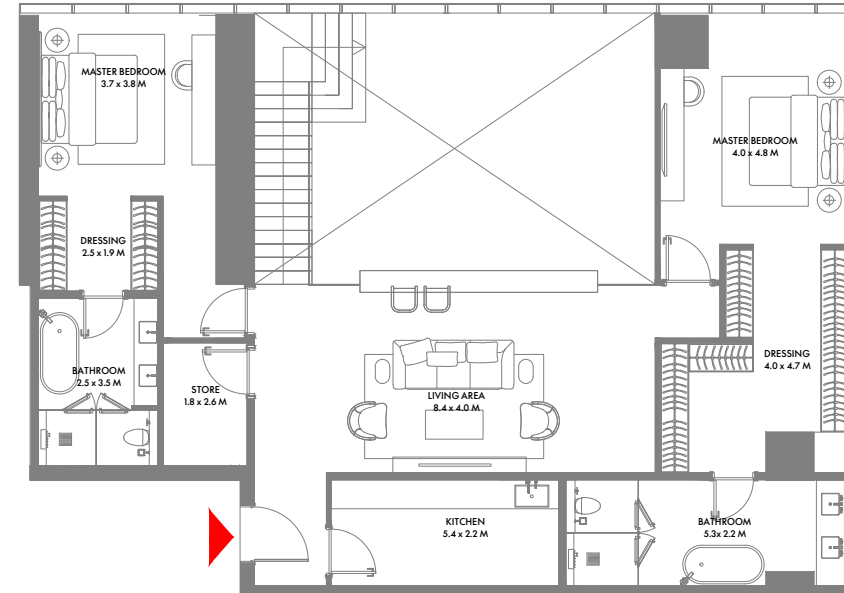
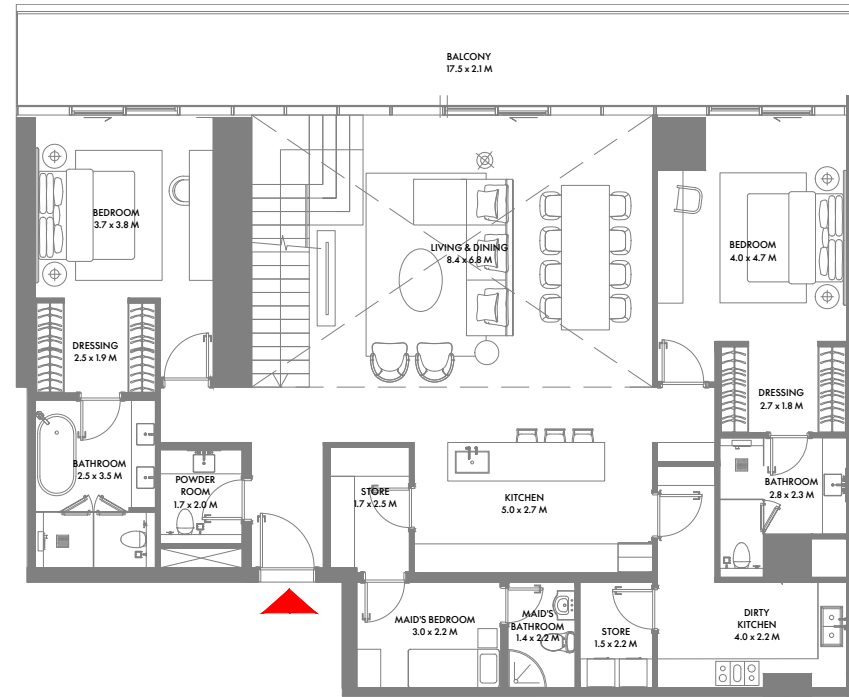
Unit Area: 263.22 Sqm (2,834 Sqft) | Balcony Area: 55.33 Sqm (596 Sqft) | Total Area: 318.55 Sqm (3,430 Sqft)

1-Measurements are indicative 'finish to finish' in Metric & Imperial excluding construction tolerance. 2-Plot/unit dimensions may vary from brochure, and unit types/plans may exist as mirrored versions; 3-All images used are for illustrative purposes only. 4-Unless stated otherwise, all fittings and interior decorative items shown are for illustrative purposes only. 5-The developer reserves the right to make alterations, at its absolute discretion, without any liability whatsoever up to the final 'as built' status.

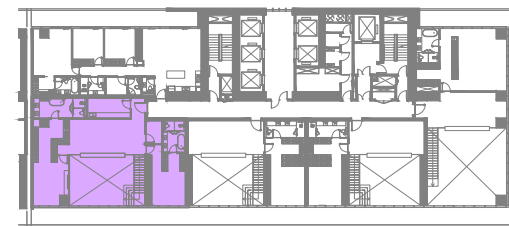
4 Bedroom E

Unit Area: 303.03 Sqm (3,262 Sqft) | Balcony Area: 90.53 Sqm (975 Sqft) | Total Area: 393.56 Sqm (4,237 Sqft)

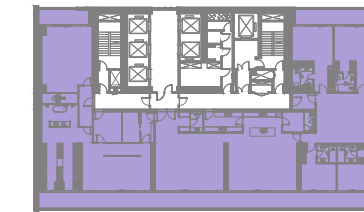
1-Measurements are indicative 'finish to finish' in Metric & Imperial excluding construction tolerance. 2-Plot/unit dimensions may vary from brochure, and unit types/plans may exist as mirrored versions; 3-All images used are for illustrative purposes only. 4-Unless stated otherwise, all fittings and interior decorative items shown are for illustrative purposes only. 5-The developer reserves the right to make alterations, at its absolute discretion, without any liability whatsoever up to the final 'as built' status.



11TH FLOOR



12TH FLOOR



37TH TO 40TH FLOOR

4 Bedroom Duplex A

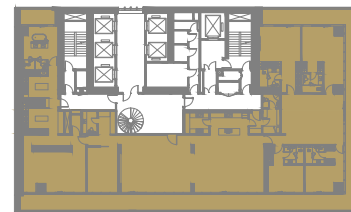
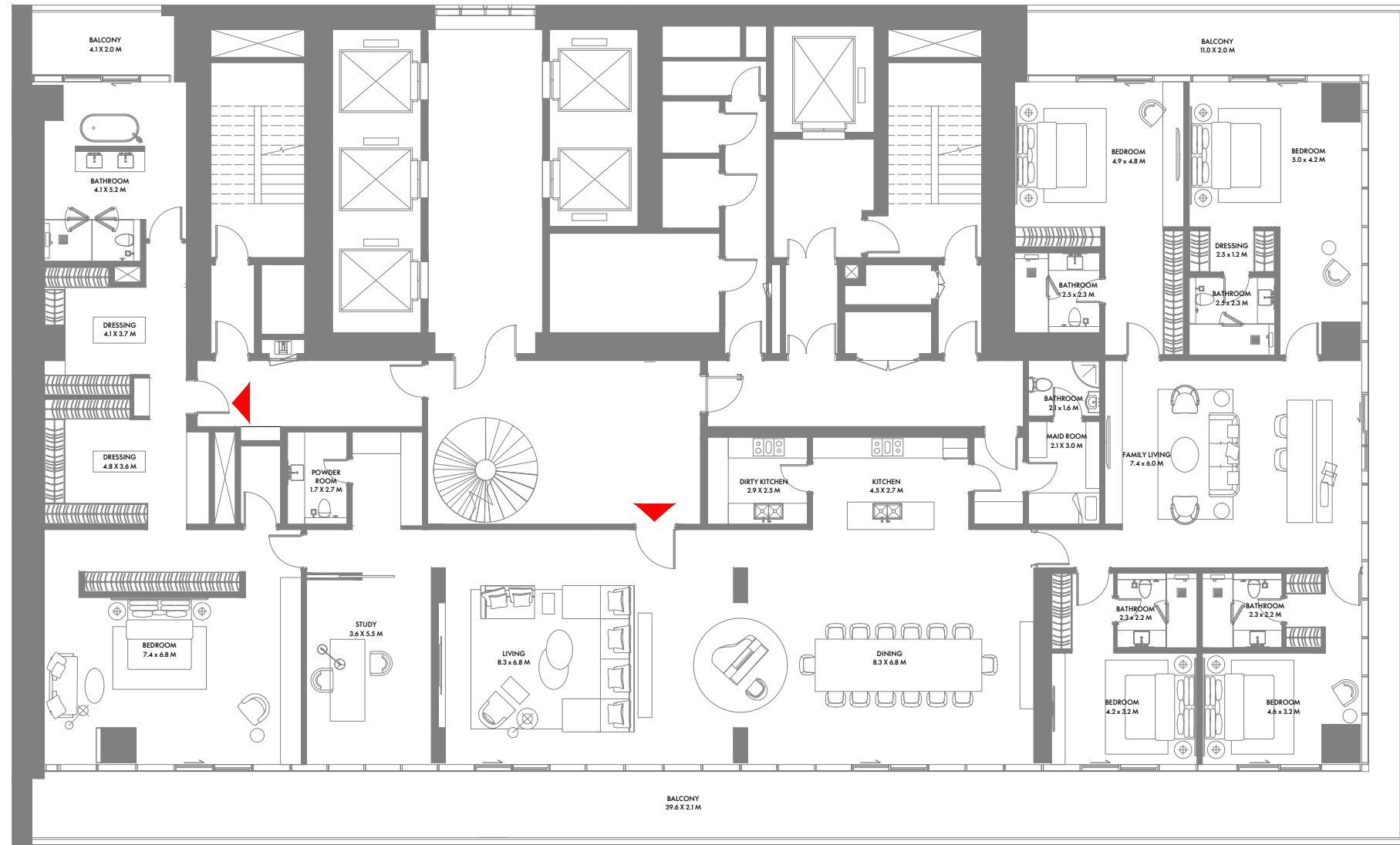
Unit Area: 389.28 Sqm (4,191 Sqft) | Balcony Area: 35.58 Sqm (383 Sqft) | Total Area: 424.86 Sqm (4,574 Sqft)

5 Bedroom Penthouse

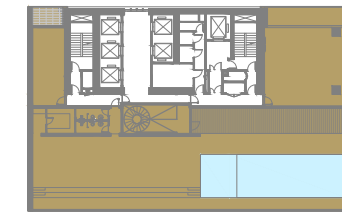
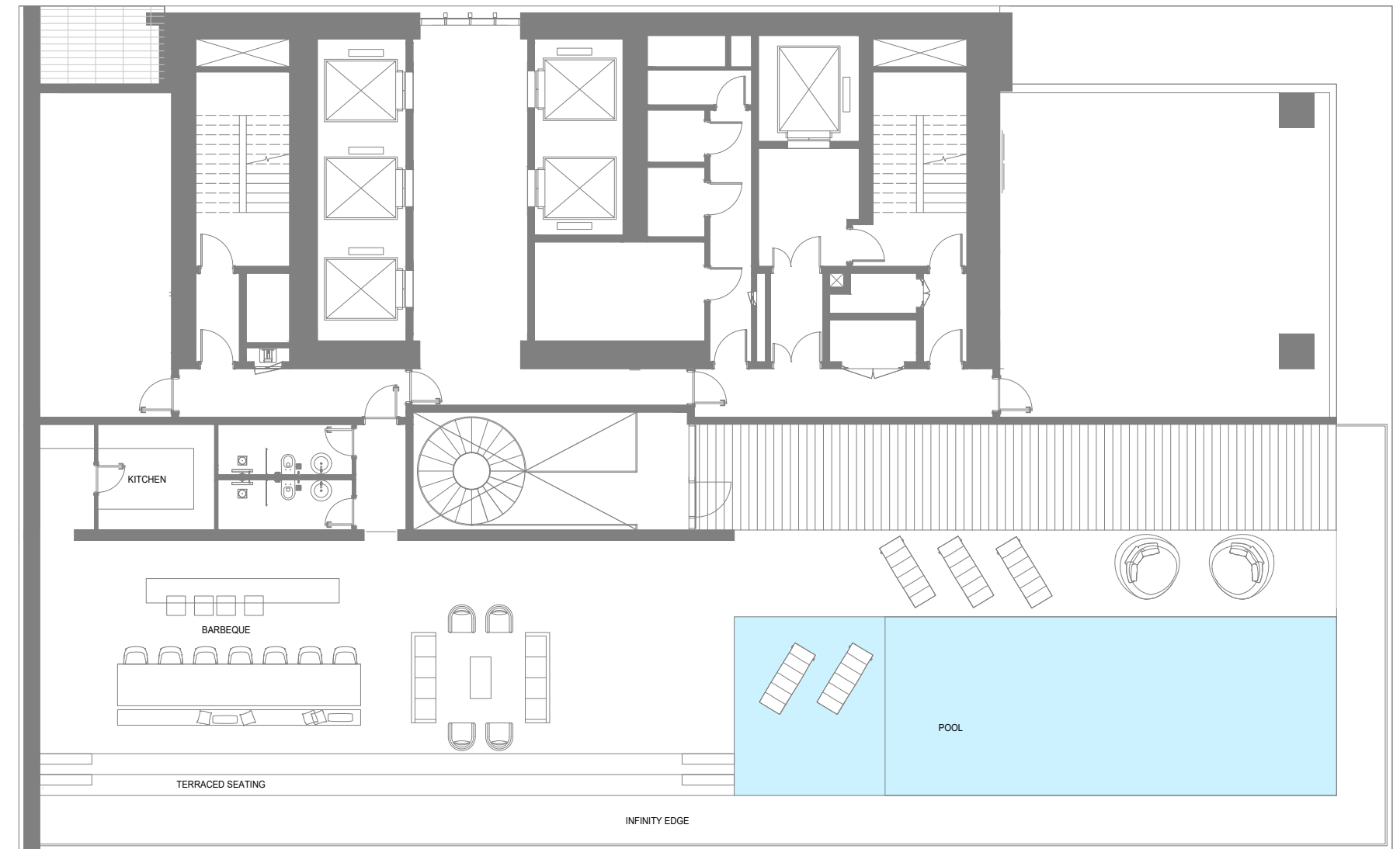
Unit Area: 557.48 Sqm (6,001 Sqft) | Balcony Area: 140.28 Sqm (1,510 Sqft) | Total Area: 697.76 Sqm (7,511 Sqft)

1-Measurements are indicative 'finish to finish' in Metric & Imperial excluding construction tolerance. 2-Plot/unit dimensions may vary from brochure, and unit types/plans may exist as mirrored versions; 3-All images used are for illustrative purposes only. 4-Unless stated otherwise, all fittings and interior decorative items shown are for illustrative purposes only. 5-The developer reserves the right to make alterations, at its absolute discretion, without any liability whatsoever up to the final 'as built' status.

1-Measurements are indicative 'finish to finish' in Metric & Imperial excluding construction tolerance. 2-Plot/unit dimensions may vary from brochure, and unit types/plans may exist as mirrored versions; 3-All images used are for illustrative purposes only. 4-Unless stated otherwise, all fittings and interior decorative items shown are for illustrative purposes only. 5-The developer reserves the right to make alterations, at its absolute discretion, without any liability whatsoever up to the final 'as built' status.



41ST FLOOR



ROOF FLOOR

Presidential Suite

Unit Area: 541.54 Sqm (5,830 Sqft) | Balcony Area: 132.64 Sqm (1,428 Sqft) | Terrace Area: 413.93 Sqm (4,456 Sqft) | Total Area: 1,088.11 Sqm (11,714 Sqft)

1-Measurements are indicative 'finish to finish' in Metric & Imperial excluding construction tolerance. 2-Plot/unit dimensions may vary from brochure, and unit types/plans may exist as mirrored versions; 3-All images used are for illustrative purposes only. 4-Unless stated otherwise, all fittings and interior decorative items shown are for illustrative purposes only. 5-The developer reserves the right to make alterations, at its absolute discretion, without any liability whatsoever up to the final 'as built' status.

Presidential Suite

Unit Area: 541.54 Sqm (5,830 Sqft) | Balcony Area: 132.64 Sqm (1,428 Sqft) | Terrace Area: 413.93 Sqm (4,456 Sqft) | Total Area: 1,088.11 Sqm (11,714 Sqft)

1-Measurements are indicative 'finish to finish' in Metric & Imperial excluding construction tolerance. 2-Plot/unit dimensions may vary from brochure, and unit types/plans may exist as mirrored versions; 3-All images used are for illustrative purposes only. 4-Unless stated otherwise, all fittings and interior decorative items shown are for illustrative purposes only. 5-The developer reserves the right to make alterations, at its absolute discretion, without any liability whatsoever up to the final 'as built' status.

ABOUT ARADA

Launched in 2017 and headquartered in the UAE, Arada was created to build spaces people connect with for healthier, happier and more meaningful lives. Arada's scope of operation covers property development, retail, education and hospitality.

Arada has so far launched four record-breaking communities in the Emirate of Sharjah, Aljada, Masaar, Anantara Sharjah Resort & Residences and Nasma Residences as well as Jouri Hills at Jumeirah Golf Estates and Armani Beach Residences at Palm Jumeirah, both in Dubai.



 **ARADA**

arada.com